

INDEX

Ambassador Award (Rural/Youth	10	Lawn Mower Racing	12
Animal Nursery/Reptile Room	11	Map	03
Art	24	Membership	05
Chris Sperou	09	Metalwork	35
Crocheting	30	Office Hours	05
Cut Flowers	32	Photography	25
Demo Derby	23	Pot Plants	30
Entries	06	Poultry	19
Entry Forms	26/27	President's Report	04
Floral Art	34	School Work Display	36
General Information	05	Scrapbooking	35
General Rules and Regulations	07	Shearing	20
Handicrafts	28	Stadium Cross	13
Honary Life Members	06	Stud Sheep	15
Horse Events	42	Timetable	08
Indoor Open	24	Vehicle & Engine Display	12
Indoor Children's	36	White Wool	18
Junior Show People	11	Wind Farm Comp	35
Kindergarten Section	36	Woodturning	35
Knitting	30	Woodwork	35
Machine & Embroidery	28	Yard Dogs	19

Thank you to Murray Nankivell - Accountants, Business & Taxation Consultants
for being the Honorary Auditors for the SE of SA & Border Show Societies Association Inc.



2021 Show Book Photos Supplied by: Steve Chapple and Mary Whitehead



Thank you

We would like to take this opportunity in joining all other South Australian Show Societies in extending our sincere thanks and appreciation to the sponsors of the Agricultural Societies Council of South Australia.

We acknowledge the aid and support of the following organisations listed below that are connected with all events associated with the Agricultural Societies Council and the Country Show Societies of South Australia. Please support the organisations that support us.



Government of South Australia

Primary Industries and Regions SA



Gallagher

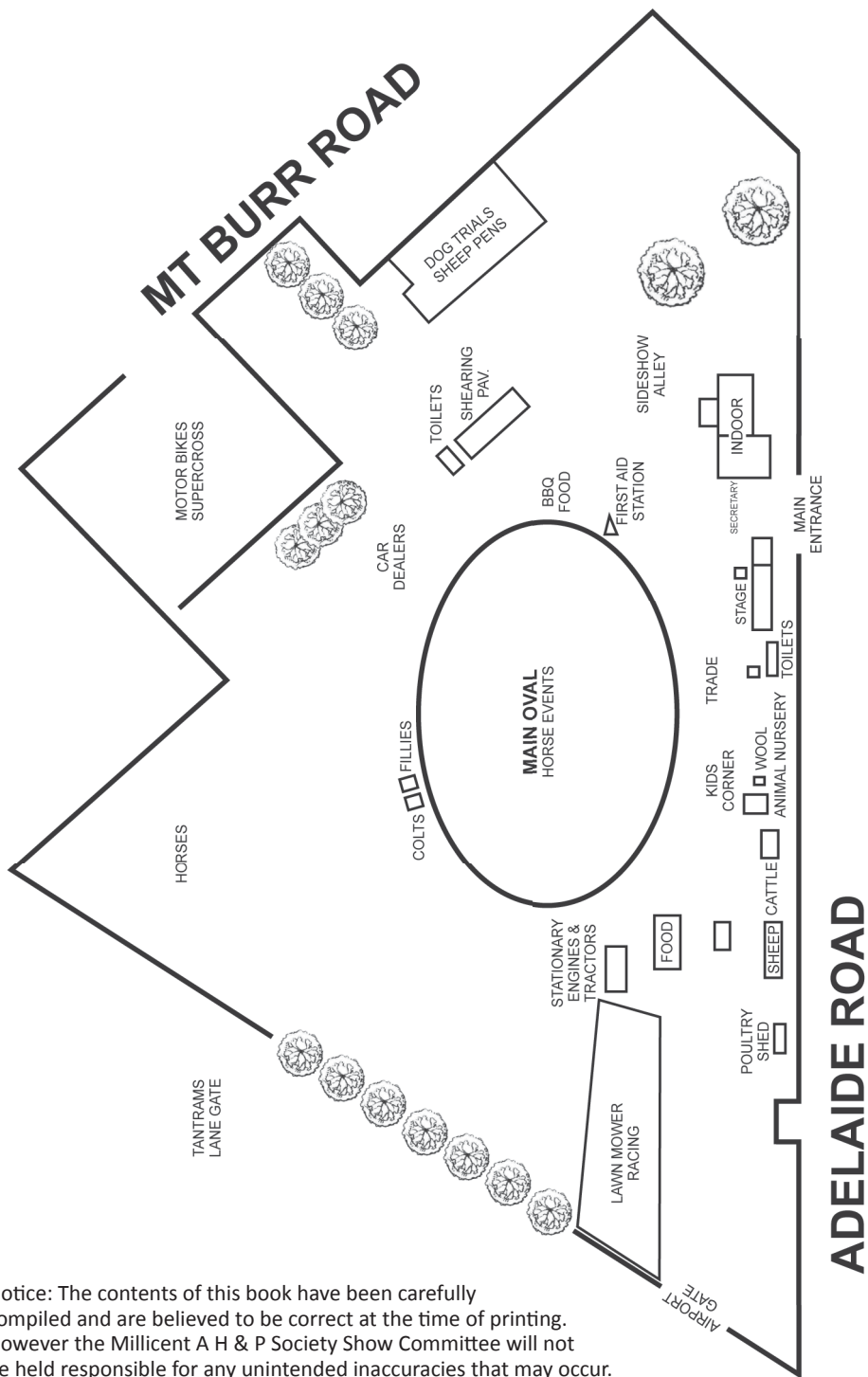


Stock journal



Nutrien
Livestock





Notice: The contents of this book have been carefully compiled and are believed to be correct at the time of printing. However the Millicent A H & P Society Show Committee will not be held responsible for any unintended inaccuracies that may occur.

PRESIDENT'S REPORT 2020

The last year has been an exceedingly difficult year for the world and for all clubs, show societies and businesses. Unfortunately, we were left with no alternative but to cancel our annual show in May 2020.

I am very hopeful we will be able to hold a show this year, things are looking positive that we will be able to see our show go ahead even if some restrictions are still in place.

In the past year we have still achieved a lot with the ongoing development of the showgrounds. The most pleasing being the two Federal grants and the support from the Wattle Range Council.

The first Federal Grant being for \$82,837.70 (inc gst) for the fit out of Vera's kitchen that should be finished by the end June 21.

The second Federal Grant was support to Agricultural Shows and Field Days throughout Australia to help with ongoing costs so we will be able to make our show happen this year.

Many thanks to Barb Nitschke and Bev for the work involved with the grant application.

The pine trees at the shearing shed are almost gone and when fire season closes, we will be able to finish and do a final clean-up.

The horse yards have also had a major upgrade while not quite completed they will be done before this year's show.

We have also built two viewing mounds at the lawnmower track which have proved to be a success. When eventually covered with grass will be an asset to this area.

The RV park has been quite popular over the spring and summer since Covid restrictions have lifted and has been very profitable for the last 2 months. The RV caravan area has also had some upgrades regarding 15amp outlets and new water points installed.

A huge thank you to Sue and Michael for all the work they have done regarding the RV Park and the maintenance of the showground.

The work for the dole project was put on hold due to Covid and at this stage we are waiting for feedback from our co-ordinator for any future starting dates.

SALMRA were able to hold a lawnmower race meeting at our track early in Nov 2020 and drew 30 mowers to compete. This was double the number at the previous show. They believe that could grow to around 50 by this November.

The Mount Gambier MotoX Club have had a surge in members and have recently enquired about holding a race meeting in May. They believe their entries for the show weekend could be as high as 150 riders up from 100, if Covid does not cause havoc again.

Finally, a special mention to Grace who in her first year as Secretary has been incredibly efficient and is bringing new ideas to the role.

Also, congratulations to all the new life members your service to the Millicent A H & P Society is appreciated greatly.

Let us hope we can put together a show that will be better than any we have had in the past years so we can put this last 12 months behind us.

NEVILLE COPPING PRESIDENT 2020

PATRONS: Ada Gurney, Neville Hutchesson, Garth Huppertz, Des Noll, Brian Foster

ENTRANCE TO SHOWGROUNDS

Horses, cattle, sheep & Lawn Mower competitors are to use Tantrams Lane gate for entry and exit. No other vehicles to use Tantrams Lane gate on Saturday. Trade to use the entrance gate off Mt Burr Road.

GENERAL INFORMATION

Bank Transfer is now available: Millicent AH & P Society BSB: 805-050 Acc No 102217542 Please use your surname as your reference. Once your bank transfer is complete please email showofficemillicent@gmail.com with your deposit details.

Adult membership \$20 Entitles an adult member admission on all days

Junior membership \$10 Under 18 years Entitles a junior admission on all days

On-Line Tickets will be available this year at
www.agfast.online/event/millicent-show-5th-7th-nov-2021

PREPAID PASSES

Only available at office 11th October to 4th November.

Family - 2 day prepaid pass \$40 - 2 adults & first 3 children under 17. Additional children \$7

Adults - 2 day prepaid pass \$20

Aged Pensioner - 2 day prepaid pass \$15

Child (5 - 17) \$7 for 2 day prepaid pass, or \$5 for 1 day prepaid pass

Child under 5 years - FREE

GENERAL ADMISSION

1day \$30 - 2 adults and first 3 Children under 17. Additional Children \$7

Adults - 1 day \$15

Children (5 - 17) - 1 day \$5

Children under 5 - FREE

Aged Pensioners - 1 day \$10

EXHIBITOR MEMBERSHIP

\$15 All exhibitors who lead, ride or drive at the show. This membership has no voting rights.

Showground Office mobile 0459 333 560

www.millicentshow.com Email: showofficemillicent@gmail.com

Messages cleared regularly

Where convener's names and phone numbers are provided in the program, please directly contact those people regarding questions about their sections.

OFFICE HOURS

October 11th – 15th 10am – 2pm Monday - Friday

October 18th – 22nd 9am – 5pm Monday – Friday

October 25th – 29th 9am – 5pm Monday – Friday

ALL INDOOR ENTRIES CLOSE - Friday 29th October – 5pm

OFFICE HOURS AFTER ENTRIES CLOSE

November 1st – 3rd 9am – 4pm Monday - Wednesday

4th – 6th 8am – 5pm Thursday - Saturday

9th 10am – 1pm Tuesday in the main hall for collection of prizemoney and trophies, after which time they will be forfeited.

PRESIDENT: Neville Copping, Senior Vice President: Sue Vanderheul, Junior Vice President: Ian Nitschke, Secretary: Imm P Pres: Jim Garner, Publicity Officer: Helen Cranage, Treasurer: Bev Copping, Committee members: Suzie Hutchesson, Irene Dickens, Klaus Emmerich, Barb Nitschke, Carol Garner, Sandy Bell, Betty Walker, Kathleen Staude, Brett Keatley, Katrina Keatley.

Covid-19. A Covid Safe plan has been implemented and all State Government and SA Health protocols will be strictly followed.

In line with group gatherings, social distancing and non-contact sporting guidelines will be in place.

ALL ENTRIES TO

Box 202, Millicent, 5280, SA. Mobile 0459 333 560

ENTRIES CLOSE:

Sheep	5th November 2021
Cattle	5th November 2021
Wool	5th November 2021
Indoor sections	29th October 2021 at 5pm
Horses Online only www.eventsecretary.com.au	Open 1st Oct - Close 28th October
Young Judges Championships.....	6th November 2021
Poultry	6th November 2021
Entry fees must be paid at time of entry.	

LATE ENTRIES/EXHIBITS WILL NOT BE ACCEPTED

All entries must be made on the official entry form. Indoor exhibits must not be removed from the grounds before 5pm Saturday, except by permission of section steward.

THE COMMITTEE OF THE MILLICENT A H & P SOCIETY wish to thank all the business houses, clubs and private people for their donations towards trophies, prize money and advertising. Thank you to businesses who have donated vouchers & products. Also thank you judges, stewards, conveners, committee members, exhibitors, schools, service clubs and other voluntary helpers, who all help to make the Millicent Show successful.

PRIZEMONEY

OUTSIDE SECTIONS Will be paid on day of Show

INDOOR SECTIONS Prizemoney & all trophies can be collected between 4.30 - 5pm Saturday 6th in Main Hall

All other prizemoney and all trophies can be collected from the Show Office between 10am - 1pm Tuesday, November 9th, 2021

NOTE: Monies not collected on this day will be forfeited.

HONORARY LIFE MEMBERS

1893	George Glen*	1981	Robert W Manhood*	1996	Ron Thompson*
1914	George Plunkett*	1981	Keith Cameron*	1998	Colin Bowman*
1957	Ivor T Williams*	1981	William T Greenwood*	1998	Neville Hutchesson
1958	Graham G Major*	1985	C Elsie Watson*	2004	May Sharp*
1960	Ewen A D Cameron*	1986	Mavis J Smith*	2004	Joan Morgan
1960	W Edward Gray*	1986	Jean E Varcoe*	2006	Rick Sims
1960	Eric C Hutchesson*	1987	Gordon B Hutchesson*	2006	Dot Allen*
1960	Ralph E DeGaris*	1987	J Yvonne Varcoe*	2012	Julie Osborne
1960	George W Thompson*	1988	Michael W Osborne	2017	Robin Thomas
1975	T Danby Stuckey*	1990	Mary M Reekie*	2017	Garth Huppattz
1976	William J Gordon*	1992	Mary V J Whitehead*	2017	VJ (Jim) Garner
1976	Cecil L Hutchesson*	1993	Thelma Schumacher	2019	Suzanne M Hutchesson
1976	Vera D Bowman*	1995	Ada Gurney	2019	Carol Garner
1977	Ross M Johnston*	1995	Alan Thompson*	2020	Bev Copping
1980	E Ruth Willshire*	1995	Raymond Wendelborn		
1981	Max L Osborne*	1995	Marlene Wendelborn *		Deceased*

GENERAL RULES & REGULATIONS

1. Members must show tickets at the gate.
2. Persons, who are Indoor Exhibitors at the Annual Show and are not members, will be required to pay entry at the gate.
3. Every exhibit of plants or vegetables must have been the property of the exhibitor for not less than one month.
4. **If a judge feels an entry is not worthy of a 1st place it may be withheld.**
5. There must be three entries in each class or no second prize will be awarded, unless recommended by Judges.
6. The decision of the Judges shall be final, except where the regulations have been infringed.
7. The judge's decision is final, and if an exhibitor is not happy, please lodge a protest in writing with the Secretary no later than 4pm on the day, which the award is made. A deposit of 50% of the value of the prize must accompany each protest, which may be forfeited if the protest be deemed frivolous.
8. The committee reserves the right to make any alteration in the published program.
9. Exhibits for competition or exhibition must be in their places in the Show Pavilion not later than 6.00pm Thursday night before show.
10. Any persons or exhibitors interfering with the judges or stewards will be disqualified and prizes forfeited.
11. **All indoor exhibits must be the property of the exhibitor.**
12. If deemed necessary by the committee, any exhibitor or prize winner may be called upon to make a statutory declaration as to the bona fides of any exhibit for competition and noncompliance may render the prize liable to forfeiture.
13. The Show pavilion will be open after judging on Friday.
14. No cattle & sheep to leave the Showground's before 4pm Saturday without the permission of the secretary or the stewards.
15. No tents, booths, or hawkers will be allowed on the showground's without the permission of the committee.
16. Entries must be made on the official entry form, copies of which are enclosed with the prize list and are obtainable from the secretary.
17. Every facility is given to the exhibitors, but the committee will not undertake any responsibility for any exhibit.
18. This Society is affiliated with the SE of SA and the Border Show Societies Association and any exhibitor or exhibit subject to disqualification by that Association or by any Show Society affiliated with that Association will be debarred from competition at the Show of this Society during the period of such disqualification or until any appeal that may have been lodged against such disqualification shall have been determined. Notification of any disqualification will be forwarded to the South East and Border Show Societies Association, or appropriate bodies, by this Society.
19. All competitors compete at their own risk.

Wattle Range
 *Funerals* 

Grant & Katherine - 17 Short Street, Millicent SA 5280

Millicent • 08 8733 2067 • admin@wattlerangefunerals.com.au
Naracoorte • 08 8762 0099 • nara@wattlerangefunerals.com.au

TIMETABLE

Gates open Friday 12 noon 2021 (times subject to change)

FRIDAY

9.00am	Indoor Judging
1.00pm	Indoor Hall opens
3.00pm	Motocross practice begins racing starts straight after practice
6.30pm	Chris Sperou – Aerobatic pilot display
9.00pm	Fireworks

SATURDAY

7.30am	Yard Dogs start
8.30am	Indoor Pavilion Opens
9.00am	Horses In Action – Hack, Breed, Pony Club, Local Hack Rings Casual Showjumping Stud Sheep Judging
10.00am	Motocross 10.00am - 5pm
10.30am	Poultry and Pigeon judging
11.00am	Unique Vehicle & Stationary Engine display - Northern end of the oval Sign on for Show Person Competition Free face painting by Christy
11.30am	Show Person Competition judging
12.00	Lawn Mower racing
2.30pm	Chris Sperou Aerobatic pilot display
3.00pm	Presentation of Indoor prizes – Main Hall
3.15pm	Grand Parade Followed by Demo Derby

SUNDAY

9.00am	Casual Showjumping Stockman's Challenge
10.00am	Harness Topsy Ring

CHRIS SPEROU - OAM

13 TIME NATIONAL AEROBATIC CHAMPION



The winner of the 2013 Australian Bi-Centennial Award is a celebrated South Australian aerobatic ace. Chris has been Australia's Aerobatic Champion on 13 occasions and a 7-time member of the champion aerobatic formation team. He has flown 35 different types of aircraft, performed in Russia, Europe and America and has been Australian

Air Show favourite for 40 years.

He was the first Australian pilot to be granted permission to fly low-level aerobatics down to ground level. His inverted straight and level flying – in mirror formation a few feet above other aircraft, or when just 25 feet above ground level for his legendary inverted ribbon cut – is breathtaking.

**COME AND SEE CHRIS SPEROU PERFORMING ON FRIDAY
5TH NOVEMBER AT 6.30PM & SATURDAY 6TH AT 2.30PM**



2021 SA RURAL AMBASSADOR AWARD & YOUNG RURAL AMBASSADOR AWARD

This award is conducted by SA Country Shows who will be duly responsible for selecting the state winner during the course of each Royal Adelaide Show. All entrants who enter the award must provide an undertaking that they will abide by the regulations and entry conditions as set out and to abide by the decisions of SA Country Shows. The rules and regulations apply to all three levels of this award: country show society, association and state levels. The award will be run by qualification through country shows to association finals with a state final being held during the Royal Adelaide Show.

AIMS:

- To highlight the importance of youth in rural South Australia and in particular the agricultural show movement.
- To identify and encourage enthusiastic, skilful, industrious and unselfish young people.
- To give young people a forum to express their views through education and experience and develop closer links with the primary industries in South Australia.

ENTRY REQUIREMENTS: Entrants must:

- Apply for and complete the entry form.
- Agree to provide a copy of their curriculum vitae (CV) for local, association and state final judging by the required date.
- Provide information indicating their reasons for applying for entry together with CV: indication work experience, community participation and agricultural show involvement.
- Be residents of South Australia.
- **Rural Ambassador Award entrants must be aged 20 years and under 30 years** as of the 1st May 2021 (eg born between 2nd May 1991 and 1st May 2001 inclusive)
- **Young Rural Ambassador Award entrants must be ages 16 years and under 20 years** on the 1st May 2021 (eg born between the 2nd May 2001 and the 1st May 2005 inclusive).
- Be enthusiastic and knowledgeable about rural life and affairs and agricultural shows.
- As a state finalist consent for your name and contact details to be made available on the SA Country Shows website for show societies should they wish to contact you.
- Be able to spend the required time at the local show, association level finals and be available to attend the Royal Adelaide Show. Details at www.sacountryshows.com

JUDGING CRITERIA:

- Entrants must wear smart casual clothing.
- Entrants to be judged in accordance with the following guidelines:
- Country Show Involvement 25 points
- Community Involvement 15 points
- General and Rural Knowledge 20 points
- Personal Presentation/Personality 10 points
- Ambitions/Goals 10 points
- Communication Skills 10 points
- Dinner/interview/General Interaction 10 points

TOTAL 100 points

Entry forms can be downloaded from the SA Country Show www.sacountryshows.com

Rural Ambassador Award • Young Rural Ambassador

JUNIOR SHOW PEOPLE AWARDS

To be run on the Saturday of the show. Competitors to sign on at or before 11.00am
Arrival for judging at 11.15am. Judging at 11.30am at outdoor stage.

Sponsored by Toy Kingdom Millicent

Convener: Carol Garner. All enquiries to the show secretary's office.

Baby of the Show.....New born to 12mths
Master Toddler1-3yrs
Miss Toddler.....1-3yrs
Senior Show Person.....12-15yrs

Master Tiny Tot.....4-6yrs
Miss Tiny Tot.....4-6yrs
Junior Show Person.....7-11yrs

SPECIAL TROPHIES FOR THE SE OF SA AND BORDER SHOW SOCIETIES ASSOCIATION

Trophies for 1/1/2021 to 31/12/2021

Association Trophy 1 Most Points Cut Flowers 2 Shows
Association Trophy 2 Most Points Horseman/Stockmans Challenge 2 Shows
Association Trophy 3 Most Points Shearing 2 Shows
RAHS Medallion Most Points Hack 16 Hands & Over in Qualifying Ring 2 Shows
Junior Association Trophy Most Points Cookery 2 Shows

Sunbeam Fruit Cake, Genoa Cake and CWA / Laucke Savoury Scone competitions semi-final 2021 will be held at Mundulla Show 2022.

Winners will be eligible to compete at the State Final at the Royal Adelaide Show 2022.

Cake and Scone entries must be from an individual and must include the entrants name and full contact details.

Future notification of any changes to these shows involved in the semi-finals may apply.

Featured at this years show will be BLOKES CHOCOLATE CAKE - 8" round Iced chocolate cake. Not a packet cake. Made by a bloke. 1st \$200, 2nd \$50.

Sponsored by Millicent Rotary Club

ANIMAL NURSERY & REPTILE ROOM

The Animal Nursery is back and better than ever for 2021! Children can cuddle and feed cute baby animals such as rabbits, ponies, goats, sheep, pigs chickens, ducklings, kittens and lambs.

Daily bottle feeding of baby animals will take place multiple times per day and we invite children to come along and help! The reptile room from Mount Gambier SA will be displaying their reptiles on Friday & Saturday and will be holding interactive displays over the weekend, so come down and see Carolyn for all your reptile needs and enjoy all we have to offer at the Animal Nursery this year!

Grace Keatley (Animal Nursery Convener) 0423613241



MOWERS @ MILLICENT 2021

SALMRA (South Australian Lawn Mower Racing Association) was formed to grow and promote the sport of lawn mower racing in South Australia and in turn raise money for charity and local communities.

Following nine events in SALMRA's first 12 months of racing, lawn mower racing will be back at the Millicent Show for 2021.

Lawn mower racing is a fun and affordable form of motorsport with racing classes ranging from standard mowers all the way up to Super Modified mowers running 450cc motorbike engines.

Build rules can be downloaded from www.salmra.com.au Competitor entry for Mowers @ Millicent 2021 is \$50. Email contact@salmra.com.au to enter.



UNIQUE VEHICLE & STATIONARY ENGINE DISPLAY

Display 10am - 2.30pm Sat 6th November.

Entrants to enter via Tantrams Lane gate at 9am

Featuring cars, bikes, trucks and tractors.

Convener: Helen Cranage – 0438 334 665

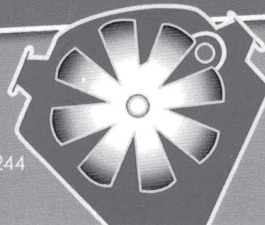
Roger Smith
AUTO PARTS

80 George Street
Millicent SA 5280

Phone (08) 8733 3444

Fax (08) 8733 5007 **Mobile** 0418 824 244

Email rog1113@bigpond.net.au



2021 MILLICENT STADIUM CROSS



FRIDAY

3pm until late

SATURDAY

9am until approx 4pm

PROUDLY SPONSORED BY

**LAROCCO'S
LEAP**



ROBE EARTHMOVERS



Australian
Motorcyclist
Association



Mount Gambier Junior Motorcycle Club has been holding this event for many years in conjunction with the Millicent A P & H Show Society. The event attracts local and interstate riders from South Australia, Victoria and other state's.

The event is held over two days with both junior and senior classes racing. The Mount Gambier Junior Motorcycle Club has recently upgraded and modified the track to be suitable for both experienced and junior riders.

The Dale Teagle Memorial Feature Race will again be contested on the Friday evening under lights, with the top 25 riders from the Expert, MX1 & MX2 classes featuring a 15 lap race with riders competing for the \$500 cash prize and an additional \$100 for Hole Shot prize pool.

On Friday afternoon, practice will begin at 2pm with racing commencing approx. 4pm and will continue with the last round under lights. Saturday will start racing at 9am.

Due to last years event not going ahead due to COVID19 the Mount Gambier Junior Motorcycle Club is hoping for large numbers of riders attending this years event.



**LAROCOS
LEAP**



ROBE EARTHMOVERS



Australian
Motorcyclist
Association

STUD SHEEP

Saturday November 6th 2021 Judging to commence at 9am SHARP

Entries close: Friday 5th November 2021 Entry fee: \$2

Convener: Barb Nitschke 0428 332 237

Stewards: Betty Walker, Ken Walker

General Rules & Regulations

1. Millicent AH & P Society Animal Handling Waiver needs to be signed & accompany entry forms
2. All sheep must be penned by **8.30am** and ready for judging by **9.00am sharp, SATURDAY**.
3. Month when sheep were last shorn must be given to the convener at time of entry.
4. All sheep are to be shown in the wool, except as otherwise stated.
5. No entry can compete in more than one class, except where stated. Lamb (with ewe) maybe entered in lamb class.
6. **Breeders Group Classes** - 1 ram less than 1.5yrs & 2 ewes less than 1.5yrs. Bred by exhibitor. Sheep to be drawn from classes.
7. Prize cards and ribbons presented to 1st, 2nd and 3rd.
8. All stud sheep must meet all their own Breed's Society Regulations eg. tattoos, ear marks etc.
9. There shall not be any more than two (2) entries per class, per exhibitor.
10. No sheep to leave pavilion before 4.00pm Saturday, except by permission of the Sheep Convener.
11. The judge has the right to reclassify sheep from the under 1.5yr class to over 1.5yr class where more than two teeth are showing.
12. Shorn long wools to have not more than 38mm wool, shorn short wools not more than 25mm wool.
13. OVINE JOHNE'S DISEASE: The terms and conditions of entry are aligned with RAHS, Bio-security SA rulings for SA Country shows. Details can be downloaded from www.sacountryshows.com / www.pir.sa.gov.au or www.theshow.com.au/showgrounds/royaladelaide-show/showentries
14. All sheep must be from registered and accredited Ovine Brucellosis Free flocks. Certificate No. to accompany entries.
15. The accredited vet is **Dr Sean McGrath** 08 87332782
16. Interstate sheep to have a Health Certificate signed by a Local Department of Agriculture Stock Inspector, form 2A.
17. All lambs to be born after the 1st of April this year. (All lambs to be judged on type and freshness)
18. All lamb classes may be split by Judge or Convener
19. All breeds will be supplied with Champion Ewe & Ram Sashes. Where there is more than one breeder, reserve sashes will be awarded if there is more than one exhibit in each breed.

GLENARBIAN STUD

White Suffolk & Texel Stud Rams available

All rams presented with Lambplan figures. Glenarbian Stud is Brucellosis free and accredited. It also carries an Ovine Johnes MN3 status.

Ian & Barbara Nitschke

(08) 8733 2237 • 0408 898 030 • Fax (08) 8733 1440 email: mayurra@bigpond.com

BORDER LEICESTER

1. Ram under 1.5yrs in wool
2. Ram under 1.5yrs shorn
3. Ram over 1.5yrs in wool or shorn
4. Ram/lamb in wool or shorn
5. Ewe under 1.5yrs in wool
6. Ewe under 1.5yrs shorn
7. Ewe over 1.5yrs in wool or shorn with lamb of her own breed at foot. Rearing ability to be assessed
8. Ewe lamb in wool or shorn
9. Breeder's Group

TROPHY DONATED BY: LANDMARK

RYELANDS

10. Ram under 1.5yrs in wool
11. Ram under 1.5yrs shorn
12. Ram over 1.5yrs in wool or shorn
13. Ram/lamb in wool or shorn
14. Ewe under 1.5yrs in wool
15. Ewe under 1.5yrs shorn
16. Ewe under 1.5yrs in to be machine shorn, not more than 7 days prior to judging. Standard combs to be used & trimming permitted.
17. Ewes over 1.5yrs in wool or shorn with lamb of her own breed at foot. Rearing ability to be assessed.
18. Ewe lamb in wool or shorn
19. Breeders Group

TROPHY DONATED BY: I & B NITSCHKE

WHITE SUFFOLK

All lambs and shorn classes to be untrimmed

20. Ram under 1.5yrs shorn
21. Ram under 1.5yrs in wool
22. Pair of rams under 1.5yrs shorn
23. Ram over 1.5yrs shorn
24. Ram lamb shorn or in wool
25. Ewe under 1.5yrs shorn
26. Ewe under 1.5yrs in wool
27. Pair of ewes under 1.5yrs shorn
28. Ewe over 1.5yrs shorn with lamb at foot. Lamb to be considered when judging.
29. Ewe lamb shorn or in wool
30. Breeders Group

TROPHY DONATED BY: MILLICENT TOYOTA

**TROPHY FOR BEST LAMB DONATED BY:
MILLICENT FARM SUPPLIES**

POLL DORSET OPEN

31. Ram under 1.5yrs in wool
32. Ram under 1.5yrs shorn
33. Ram over 1.5yrs in wool or shorn
34. Ram lamb in wool
35. Ram lamb shorn
36. Ewe under 1.5yrs in wool
37. Ewe under 1.5yrs shorn
38. Ewe over 1.5yrs in wool or shorn with lamb at foot. Lamb to be considered when judging.
39. Ewe lamb in wool
40. Ewe lamb shorn
41. Breeder's Group

TROPHY DONATED BY: MW & JF OSBORNE

TEXEL

42. Ram under 1.5yrs in wool
43. Ram under 1.5yrs shorn
(Classes 43 & 46 may be separated at Judges/ Conveners discretion)
44. Ram over 1.5yrs shorn
45. Ram lamb in wool or shorn
46. Ewe under 1.5yrs shorn
47. Ewe under 1.5yrs in wool
48. Ewe over 1.5yrs shorn
49. Ewe any age shorn with lamb at foot. Lamb to be considered when judging
50. Ewe lamb in wool or shorn
51. Breeder's Group

TROPHY DONATED BY: ELDERS

SUFFOLK

All entries to be tattooed and ear - marked in the approved manner

52. Ram under 1.5yrs shorn
53. Ram under 1.5yrs in wool
54. Pair of rams under 1.5yrs shorn
55. Ram over 1.5yrs shorn
56. Ram lamb shorn or in wool
57. Ewe under 1.5yrs shorn
58. Ewe under 1.5yrs in wool
59. Pair of ewes under 1.5yrs shorn
60. Ewe over 1.5yrs shorn with lamb at foot. Lamb to be considered when judging.
61. Ewe lamb shorn or in wool
62. Breeders Group

ANY OTHER BREED

Breeds to be judged in own right.

63. Ram under 1.5yrs in wool or shorn
64. Ram over 1.5yrs in wool or shorn
65. Ram lamb in wool or shorn
66. Ewe under 1.5yrs in wool or shorn
67. Ewe over 1.5yrs in wool or shorn
68. Ewe lamb in wool or shorn
69. Breeder's Group

MOST SUCCESSFUL EXHIBITOR OVERALL STUD SHEEP

DONATED BY: IAN & BARB NITSCHKE - GLENARBIAN STUD

1st: 3pts, 2nd: 2pts, 3rd: 1pt. Count back in case of a tie. Champion 3pts: Reserve Champion 1pt

SUPREME BREEDERS GROUP

1 RAM, 2 EWES

Includes Show Society Sash

RESERVE BREEDERS GROUP

Includes Show Society Sash

THE SUPREME SHEEP OF THE SHOW

Supreme Sheep of the Show Perpetual Trophy

DONATED BY: CHRISMONT PARK - CHEVIOT STUD – D & C LAMONT

Includes Show Society Sash

RESERVE SUPREME SHEEP OF THE SHOW

Includes Show Society Sash

THE JIM WALKER MEMORIAL TROPHY

DONATED BY: KENLORNE POLL DORSET STUD - BJ & KA WALKER

SUPREME LAMB OF THE SHOW

TROPHY DONATED BY: MW & JF OSBORNE



THE AVENUE

N.J & M.L HUTCHESSON

Phone: (08) 8735 9070



Millicent Veterinary Clinic



62 Mount Gambier Road, Millicent | 8733 2782

More than 'just' tyres!

All leading brands of tyres and wheels

Millicent Tyre Centre

Your locally owned and operated tyre service

40 Mt Gambier Rd, Millicent SA, 5280 Ph 8733 3300



SECTION E - WHITE WOOL

Entries Close: Friday 5th November 2021 Entry Fee: \$1.00 – Prize Money: 1st \$2, 2nd \$1

Convener: Clayton White. Stewards: Kathleen & Bevan Staude

Exhibits to be in place by 5pm Thursday 4th November. Judging to follow.

- This section is to be judged on points system as approved by the Australian Wool Bureau.
- The Convener has the right to change any fleece to a more suitable class at his discretion.
- Exhibitors are requested to provide plastic bags for individual fleeces.
- All fleeces to be skirted.
- Growth of wool in no case to exceed 12 months.
- No fleece infested with tick or lice will be accepted. Any such fleece will be removed by the Convener.
- Scale of points for judging wool: Trueness to breed 10, Conformity of length 10, Soundness 10, Handle 8, Colour or bloom 6, Character 10, Density 6, Evenness 10, Clean Fleece Weight 30, Total: 100
- Fleeces eligible for one class only, except for Best Commercial Value prize, which will be judged from all entries– competitors, must nominate a fleece for this class.

WHITE WOOL CLASSES

1. Best Merino fleece
2. Best Merino Hogget fleece
3. Best Corriedale fleece
4. Best Comeback fleece
5. Best First Cross fleece
6. Best XB fleece
7. Best Border Leicester fleece
8. Best Downs fleece
9. Best XB Hogget fleece
10. Group of 3 fleeces, not drawn from classes
11. Best Commercial value fleece – drawn from all classes, fleece nominated by exhibitor.
12. Any other fleece breed

Sashes awarded to: Champion British Bred Fleece, Champion Merino Fleece, Champion Cross Bred Fleece, Champion Fleece of the Show, Most Successful Wool Exhibitor.

W J GORDON MEMORIAL TROPHY: - Trophy Donated by RJ & LP Gordon

for most points gained on the day in the white wool section. Aggregate Points: 1st: 5-pts; 2nd: 3-pts; 3rd: 1-pt. Points awarded irrespective of number of entries. Count back will operate in case of draw. Trophy will be awarded when won 3 times by the same exhibitor.

Previous Winners: BJ & KM Staude 2012 – 2018

COLOURED FLEECES

13. Best Coloured Fleece, Fine, Medium - finer than 58
 14. Best Coloured Fleece, Medium Fleece - 50s to 56
 15. Best Coloured Fleece, Strong & Rug Fleece – 48 +
- Champion Coloured Fleece**

RYEVIEW

*Border Leicester, White Suffolk, Ryeland,
Suffolk Sheep Studs. Rams Available*

MW & JF Osborne

PO Box 387, Millicent 5280

Michael 0408 838 568 - Julie 0409 858 563

E: ryeview@bigpond.com

K&S FUELS MILLCENT



PH: 8733 3133

POULTRY

Entry Fee \$1.00/class. Entries Close: Saturday 6th November
Judging to commence at 10am Saturday 6th November, Convener: Amber-lee Barrinton

Conditions:

- Birds to be caged 7am to 9.30am Saturday
 - Birds to be removed after 5pm, or at convener's discretion
 - Birds incorrectly entered will not be judged.
 - All birds must be healthy and vermin free. Any not complying will be refused entry.
 - Saturday, birds caged to be watered and feed by the owner,
 - All care taken, but no responsibility assumed.
 - Any person causing disturbance making loud, derogatory comments will be removed from pavilion, and their birds will be automatically disqualified and all awards forfeited.
- Champion Ribbons: will only be awarded if there are 5 or more entries in section.

POULTRY

- | | | |
|----------------------------|-----------------------------------|---------------------------|
| 1. Modern Game Bantam | 6. OEG Light Breed Large | 10. Light Breed Waterfowl |
| 2. Old English Game Bantam | 7. Soft feather Light Breed Large | 11. Heavy Breed Waterfowl |
| 3. AVO Bantam | 8. AOV Hardfeather Large | 12. Bantam Waterfowl |
| 4. Bantam Heavy Fancy | 9. Softfeather Heavy Breed Large | 13. Breeding Pair |
| 5. Bantam Light Fancy | | |

GOOSE

Any other variety of Poultry

A minimum of 5 entries per sub section must be entered for ribbons to be awarded – also for Champion & Reserve Bantam, Champion & Reserve Waterfowl, Champion & Reserve Poultry Exhibit

Ribbons Donated by: Millicent A H & P Show Society Inc.

SECTION I - YARD DOGS

38th Annual Millicent Yard Dog Trial - Saturday November 6th 2021 Conducted in conjunction with the SA Yard Dog Association. Entry Forms available from the South Australian Yard Dog Association website.

Association. Novice, Improvers & Open Best Working Dog trophy will be presented to:

Winner of the Open Section. Enquiries contact: Barry McCreanor 0428 965 702

Note: Bitches in season are not allowed to compete. Any competitor breaching this will forfeit all prizes & points awarded & will be disqualified from competing in any further events.

Novice winner will receive the Noel Blacksell Memorial Award. Points allocated from Mt Gambier Show and Millicent Show.

Thank you to our sponsors. Don Pegler, Dillon Wells (DR & KE Wells Transport) transport of sheep for the Yard Dogs and Shearing competitions and Coola Station.

FOSTER LIVESTOCK HAULAGE

Brad Foster 0428 849 767 / bradem1@bigpond.com

Po Box 3676, Mount Gambier SA 5290

AWI SHEARING MILLICENT SHEARING & WOOL HANDLING

SE OF SA & BORDER SHOWS ASSOCIATION
TROPHY 3 - (2 SHOWS)

Saturday 6th November

8.00am Registration

8.30am Heats commence

12.30pm Lunch

1.00pm Finals

CONTACT:

Tegan Falkner 0418 803 634

Geering Shearing

Allegra 0429 853 053

Novice, Inter, Senior, Open Shearing,
Open & Novice Wool Handling.



awi

Australian Wool Innovation Limited

SPONSORS

**WE ACKNOWLEDGE THE GENEROUS
SUPPORT OF THE FOLLOWING BUSINESSES...**

COOLA STATION

Tom & Tom Ellis

- supplying the sheep

Elders

MILLICENT
Major sponsor

Supplying competition singlets

SHEARING & MOBILE CRUTCHING

Matthew Bowman 0418 352 025

GEERING SHEARING PTY LTD

Alister 0435 954 734

LOADING RAMP SUPPLIED BY

Mick Brennan & Family 0427 600 445

DR & KE WELLS TRANSPORT

Dylan - 0418 119 982

Transport sheep for the shearing
& yard dog competition

WOOLPRESS SUPPLIED BY BANYULA PASTORAL

Colin Croser

STOCKOWNERS SHEARING

Rick Baldock 0427 837 310

ORRIE COWIE MERINO STUD



COOLA STATION

Private Mail Bag 14 Mount Gambier, South Australia 5291



AJ & PA McBRIDE PTY LTD

KONETTA STATION MANAGER

KINGSLEY BREEDING
0429 342 019

PASTORALISTS • HORTICULTURALISTS • VITICULTURALISTS • GRAZIERS

DR & KE WELLS TRANSPORT



PO Box 773, Millicent SA 5280
drkewells@hotmail.com

*For all your Livestock
Transport needs*

Call Dylan Wells 0418 119 982



GOWAN BRAE POLL DORSET STUD

LEIGH CLIFFORD 0427 799 121

Sheep prepared by

BOWMAN SHEARING
AND CRUTCHING SERVICE
MATTHEW BOWMAN 0418 352 025

GEERING SHEARING PTY LTD
ALISTER 0435 954 734

 **MILLICENT
FARM SUPPLIES**

**Millicent Farm Supplies
are proud to
sponsor our local
community events.**



**For all your Farming Supplies
Contact Tim Moyle
Mobile 0448 883 812**

North Terrace, Millicent, SA 5280, Australia
Tel: +61 08 87334966 Mob: +61 448 883 812

Email: tim@millicentfarm.com.au office@millicentfarm.com.au www.millicentfarm.com.au



**Proudly supporting
Sports Shear SA**

**Justin and Anthea Lines 08 8893 4006
Gum Hill Poll Merinos Mt Bryan SA**

Nutrien *Ag Solutions®* **MILLICENT**

At Landmark, we're proud to support local communities through our sponsorship of supporting local clubs. The country is more than a place to do business; it's been our home for over 150 years.

- Farm Services • Fertilisers & Spreading
- Livestock • Real Estate • Wool • Finance
- Insurance • Merchandise

**Lot 14 McIntyre Road
Phone 8733 2733**

For more information visit landmark.com.au

Meet your Prime Super Regional Managers for South Australia

Give your RM a call to find out how they
can help you with your super.

1800 675 839 www.primesuper.com.au



Call 1800 675 839 for a Short-Form Product Disclosure Statement. Prime Super (ABN 60 962 236 823)
is issued by Prime Super Pty Ltd (ABN 81 007 241 010, AFSL 210723, FSC L0000277).

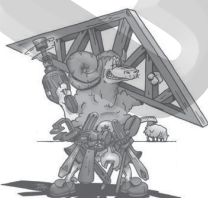
SHEARING SHEDS & RURAL CONSTRUCTION

G & M Kendrick

Phone 08 8757 2189 / Mobile 0428 572 189

Email: info@kendricksheds.com.au

www.kendricksheds.com.au

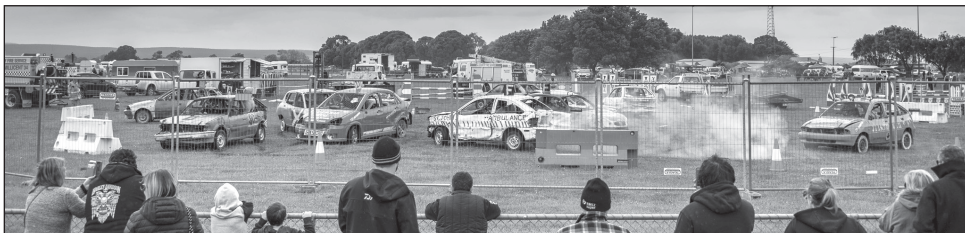


22ND YEAR OF DEMOLITION DERBY

SATURDAY AFTER 3.15PM

Make sure you at the show to check out the 22nd running of the Demo Derby.

Unique to the Millicent Show Jim & Joe Garner and a big team of dedicated car enthusiasts gather together to give the show supporters a wonderful time watching how these guys like to have fun destroying the four-cylinder cars they have built especially for this event. Standard road cars are stripped of glass and flammables then for their own safety roll cages are fitted. Drivers include both sexes, so no holding back in the action-packed destruction of the cars that takes place.



JIM, CAROL & JOE GARNER'S



*Garage, Towing
& Wrecking*

For all your mechanical repairs

Phone 8733 2942

Mobile 0418 799 499

10 Aberle Street, Millicent

INDOOR OPEN EXHIBITION PAVILION

Grand Aggregate Trophy Winner - Trophy donated by the Millicent AH & P Society

Enquiries to Hall Convener Sue Vanderheul 0417 847 473

All exhibits to be at the hall on Thursday 8.30am to 6.00pm. All entries \$1, 1st - \$2, 2nd - \$1

- All sections close Friday 29th October at 5pm
- **NO LATE ENTRIES ACCEPTED**
- No Prize-winning entries to be re-entered
- **LIMIT: 2 entries per person per class**
- Stewards in attendance to receive entries at the hall on Thursday 8.30am to 6:00pm.
- Floral Art - Staging of exhibits to be completed by 6pm Thursday night 7th November
- Judging of all indoor sections to occur at 9:30am FRIDAY.
- All prizes presented in the Main hall.
- Group entries ineligible for aggregates. Enter exhibits under individual names.
- **All entries must stay until 5pm Saturday. Prizemoney can also be collected between 4.30 - 5pm.**

ENTRIES: PO Box 202 Millicent SA 5280.

Susie Hutchesson donating to the Indoor Section

1. If a judge feels an entry is not worthy of a 1st place it may be withheld.
2. There must be three entries in each class or no second prize will be awarded, unless recommended by Judges.
3. The decision of the Judges shall be final, except where the regulations have been infringed.
4. The judge's decisions are final, and if an exhibitor is not happy, please lodge a protest in writing with the Secretary no later than 4pm on the day, which the award is made. A deposit of 50% of the value of the prize must accompany each protest, which may be forfeited if the protest be deemed frivolous.

SECTION K – ART

Steward: C Garner 0428 987 793

Margaret Andre Memorial Prize awarded to the most outstanding painting of the Show

Donated by the Andre Family with thanks.

- Limit 2 entries per class
 - Pictures must be framed and have wire on the back ready for hanging
 - Artist's name must be covered until judging has finished
 - All entries to be collected 5pm Saturday.
 - Maximum size 1metre square, no heavier than 3.5kg
 - Previous winning entries in any section of a Millicent Show are disqualified from re-entry.
1. Landscape in oil/acrylic 10. Animals in any medium
 2. Seascape in oil/acrylic 11. Pencil or Charcoal black and white only
 3. Landscape in watercolour 12. Any open subject not already mentioned
 4. Seascape in watercolour 13. Open Novice for Artists who have only
 5. Flowers in any medium been painting or drawing for 12mths
 6. Portraiture in any medium 14. Indigenous Art
 7. Abstract in any medium 15. Painting on any object (not folk art)
 8. Drawing with colour 16. Sculpture any medium (not to exceed 1 mt square)
 9. Pastel any subject

Sashes & Trophies for Champion and Reserve Champion exhibits.

SECTION L – PHOTOGRAPHY OPEN

Stewards: Carol Garner

- LIMIT: 2 entries per person per class
- Single colour backing card in black or white preferred
- **No Matt Board Framing Allowed**
- Maximum of 2cm card border around photograph only
- All photographs to be taken by exhibitor
- All photographs are to be mounted on backing card
- Framed Entries **Not** Accepted
- Exhibitors **must** have the entry card attached to the backing card
- Exhibitors name & class number to be written on the back of each entry optional
- Minimum size 6" x 4" (10cm x 15cm) Maximum 12" x 8" (30cm x 20cm) or A4
- Photo & digital enhancement is allowed but **NO** captions

All Entries: \$1 Prize money 1st - \$5, 2nd - \$3

BLACK/ WHITE OR SEPIA PRINTS

1. Scenic
2. Wildlife or Animal study
3. People and Portraiture
4. Any other subject

COLOUR PRINTS

5. Landscape
 6. Waterscape
 7. Sunset or Sunrise
 8. Floral
 9. Portrait
 10. Animals (not birds)
 11. Action or Motion
 12. Night Lights
 13. Local Area (Wattle Range District only)
 14. Birds
 15. Celebrations
 16. Rural Scene
 17. Transport
 18. Child study
 19. A Touch of Blue
 20. Open - Enlargement
 21. Panoramic – no longer than 40cms
 22. Creative/Manipulated
 23. Collection x 3 photos same theme
 24. Collage – to be creative but in keeping with a theme. Title words allowed, to be mounted on one card maximum size 42cm x 30cm (A3)
- Best Print Sash
 - Most Points Winner Trophy



**Commercial & Industrial Buildings
Domestic Sheds**

**Ph: 08 8733 4661
www.blackbirdindustries.com.au**



Indoor

2021 Millicent A.H. & P. Society Inc.

ENTRY FORM

All entries must stay until 5pm - Saturday

Entries Close - 29th October 2021 at 5pm

[illegible]

SECTION N – HANDICRAFTS

Stewards:

All wall hangings and quilts must have sleeves attached for display.

Quilts/wall hangings must not exceed the size of a single bed size.

- | | |
|--------------------------------------|------------------------------------|
| 1. A coat hanger. | 12. Patchwork – large wall hanging |
| 2. Handmade appliqué article | 13. Small appliqué wall hanging |
| 3. Quilted article by hand | 14. Large appliqué wall hanging |
| 4.. A refrigerator magnet | 15. Small patchwork quilt |
| 5. Article made of recycled material | 16. Small appliqué quilt |
| 6. A novelty, not more than \$5 | 17. Single Bed Quilt |
| 7. Cushion, any medium | 18. Article in Long stitch |
| 8. Soft toy (not doll) | 19. Any other handicraft |
| 9. Handmade jewellery any type | 20. Small quilt – Hand quilted |
| 10. Pottery | 21. Teddy Bear – any |
| 11. Patchwork – small wall hanging | • Crafts Best: Exhibit Sash |

CROSS STITCH / TAPESTRY

- 22. Counted Cross Stitch Picture not exceeding 30cm
- 23. Counted Cross Stitch Picture over 30cm
- 24. Counted Cross Stitch Picture - Article
- 25. Any Tapestry Item
- Cross Stitch and Tapestry Best Exhibit Sash

DOLLS

- 26. Best dressed doll (crochet, clothing only to be judged). Excludes porcelain & ceramic dolls.
Commercially purchased dolls only
- 27. Best dressed doll (knitting, clothing only to be judged). Excludes porcelain & ceramic dolls.
Commercially purchased dolls only
- 28. Best dressed doll (clothing any medium). Excludes porcelain & ceramic.
Commercially purchased dolls only
- 29. Best dressed miniature doll
- 30. Doll, made of a combination of materials (made entirely by exhibitor)
- 31. Any doll not listed

OPEN SECTION

- 32. Cloth body doll (up to 12")
- 33. Cloth body doll (12"-18")
- 34. Cloth body doll (18"-24")
- 35. Cloth body doll (over 24")
- 36. Doll bear
- Doll Best Exhibit Sash

SECTION O – MACHINE & EMBROIDERY

Stewards:

Classes may be regrouped at judge's discretion. Limit: 2 entries per person per class

- | | |
|----------------------------|--|
| 1. Bag of any type – Large | 8. Machine embroidered article |
| 2. Bag of any type – Small | 9. Any article of candle wicking |
| 3. Embroidered garment | 10. Hand worked cushion |
| 4. Embroidered napery | 11. Christmas gift, cost not more than \$5 |
| 5. Article of needlework | 12. Article made by exhibitor over 70 years |
| 6. Machine garment, child | 13. Any article not provided for (excluding dolls) |
| 7. Machine garment, adult | • Best Exhibit Sash |



ELDERS MILLICENT FOR FARMERS AND THE LOCAL COMMUNITY

Supporting Australian farmers with specialist knowledge, experience and advice in all areas of agribusiness. Talk to one of our expert team today.

Scott Altschwager	Area Manager	0408 806 194
David Little	Livestock Manager	0438 802 760
Jack Kain	Livestock	0418 853 599
John Jolly	Livestock	0418 465 933
Benjamin Sims	Rural Products	0419 003 860
Matt Ballantyne	Rural Products	0417 864 320
Steph Brooker-Jones	District Wool Manager	0428 650 772
Tegan Falkner	District Wool Manager	0418 803 634
Kerry Smith	Residential & Lifestyle Real Estate	0419 803 836
Grant Schubert	Rural Real Estate	0429 077 033
Tiana Wheatley	Sales Support	08 8735 5800
Loretta Willis	Sales Support	08 8735 5800
Michele Jones	Sales Support	08 8735 5800
Kevin Warn	Insurance	0419 850 929

Elders Millicent

Cnr Glen St and Railway Tce, Millicent SA 5280

P. 08 8735 5810

E. millicent@elders.com.au



SECTION P – KNITTING & CROCHETING

Steward:

Classes may be regrouped at judge's discretion. Limit: 2 entries per-person per-class.

Entries must not have been worn or washed. Special Trophy in memory of Dolly Pell

KNITTING

1. Tea Cosy
 2. Multi Coloured knee rug
 3. Bulky knit jumper
 4. Babies knitted garment
 5. Babies knitted booties
 6. Babies knitted jacket
 7. Babies knitted shawl
 8. Sleeveless pullover
 9. Adults knitted cardigan
 10. Adults knitted jumper
 11. Child's knitted cardigan
 12. Child's knitted jumper
 13. Knitted hat or beret
 14. Knitted toy
 15. Knitted doll
 16. Any article not listed
 17. Knitted Scarf
 18. Knitted Socks (pair)
 19. Over 70's Knitting
 20. Scan Homespun wool
 21. Garment Homespun wool
- Best Exhibit Sash

CROCHET

22. Multi coloured knee rug
 23. Crochet baby garment
 24. Baby's crochet shawl
 25. Crochet doily in cotton to be mounted on card
 26. Any article in crochet cotton
 27. Any crochet cushion
 28. Any crochet article under 30cm not listed
 29. Any crochet article over 30cm not listed
 30. Over 70's Crochet
- Best Exhibit Sash

SECTION T – POT PLANTS

Steward: Irene Dickens

Exhibits grown by exhibitor. LIMIT: 2 entries per person per class.

- | | | |
|----------------|---------------------------|----------------------------|
| 1. Pelargonium | 5. Plant, any in bloom | 8. Succulent, up to 200mm |
| 2. Geranium | 6. Three plants in bloom | (8") pot |
| 3. Fuchsia | 7. Hanging plant, hangers | 9. Orchid plant, any other |
| 4. Begonia | provided cymbidium | genus not cymbidium or |
| | or Australian native | Australian native |

FOLIAGE PLANTS IRRESPECTIVE OF BLOOM

- | | | |
|-------------------------------|-------------------------------|-------------------------------|
| 10. Cacti, 4" pot or smaller | 14. Hanging plant | 18. Coloured leaf geranium |
| 11. Cacti, pot larger than 4" | 15. Variegated plant | 19. Plant in pot, 8" or under |
| 12. Fern | 16. Begonia | 20. Plant in pot, over 8" |
| 13. Maidenhair fern | 17. Foliage plant any variety | • Best Exhibit Sash |



Andys

BAKERY

Phone 8733 4303

Fax 8733 4413
Email andysbakery19@gmail.com
Shop 4/6 Davenport Street,
Millicent SA 5280.



Acky's Takeaway

Open 7 days
6am till late

42 George Street, Millicent
Phone 08 8733 3585

SECTION U – CUT FLOWERS

Stewards: Sue Vanderheul, Irene Dickens

SE of SA Border Show Societies - Association Trophy 1 - Cut Flowers (2 shows)

Exhibits to be owned by exhibitor. Would exhibitors please advise and leave a container with the stewards for flowers they wish to take home. When "More than one" is shown, they must be of distinct varieties & colours unless otherwise stated
All containers supplied. LIMIT: 2 entries per person per class

TIPS FOR EXHIBITORS IN SHOWING ROSES

- NND – Not Necessarily Distinct
 - Name your rose if possible
 - Leaves should be left on poor foliage is better than no foliage
 - Face rose exhibit toward the judge & secure stem with cork, wad of paper or polystyrene
- (1) A stem is an original new growth which carries one bloom OR one bud. Disbudding is allowed
 - (2) A cut is similar to a stem that carries more than one bloom and /or bud or buds
 - (3) A bud is the unexpanded stage of a rose flower with NO petals unfurling. In the bud to full bloom exhibit, colour must be showing
 - (4) A full bloom must have centre or stamens showing

A bowl is a container, the height being less than the diameter.

A vase is a container, the height being more than the diameter.

A bowl is viewed from the front, unless otherwise specified in the show schedule.

When the number of cuts or stems are specified they are counted at the level of the top of the container.

Vases as above (but different shape container).

ROSES

Special Prize "Champion Rose of the Show Voucher"

Donated by McCourts Garden Centre – Millicent. - Voucher Valued at \$500.00

1. Rose, HT large flowered (1)
 2. Roses, HT large flowered NND (3)
 3. Rose full bloom (1)
 4. Rose full bloom (3)
 5. Floribunda Rose (1 Cut/Stem)
 6. Floribunda Rose (3 Cuts/Stems)
 7. Miniature Rose (1 Cut/Stem)
 8. Miniature Rose (3 Cuts/Stems)
 9. David Austin Rose (1 Cut/Stem)
 10. David Austin Rose (3 Cuts/Stems)
 11. Red Rose NND (3 Stems)
 12. Pink Rose NND (3 Stems)
 13. Yellow Rose NND (3 Stems)
 14. White Rose NND (3 Stems)
 15. Rosebud, Intermediate & Full bloom (1 variety)
 16. Rose – at least 3 colour (6-12 Cuts/Stems)
 17. Roses – all one colour (12)
 18. Bowl Hybrid Tea Rose (6-12 Cuts/Stems)
 19. Bowl Floribunda Rose (6-12 Cuts/Stems)
 20. Red Rose NND (1 Stem)
 21. Pink Rose NND (1 Stem)
 22. Yellow Rose NND (1 Stem)
 23. White Rose NND (1 Stem)
 24. Rose Colour Tri – 3 stems
 25. Rose Bi-colour – 3 stems
- Sash - Champion Rose of the Show 2021



McCOURTS
GARDEN CENTRE
& FLORIST

*Proud Sponser of the
Champion Rose of the Show
& Rose of the Show
(Children's Section)*

OPEN 7 DAYS • 48 DAVENPORT ST, MILLICENT PHONE: 8733 4566

OTHER FLOWERS NND

Roses not to be included in this section

- | | | |
|---|---------------------------------|---|
| 26. Pansies (3) | 36. Fuchsias, double (3) | 48. Bearded Iris (1 Stem) |
| 27. Perennials (3) | 37. Stocks, column (3) | 49. White flowers (3) |
| 28. Carnations (3) | 38. Antirrhinums (3) | 50. Purple flowers (3) |
| 29. Sweet peas (3) | 39. Aquilegias (3) | 51. Pink flowers (3) |
| 30. Single geranium (3) | 40. Cinerarias (3) | 52. Red flowers (3) |
| 31. Double geranium (3) | 41. Annuals (3) | 53. Yellow flowers (3) |
| 32. Pelargonium's (3) | 42. Gladioli (1 Stem) | 54. Bulbous or tuberous (3) |
| 33. Marguerite daisies, open (3) including anemone centre | 43. Flowering shrubs (3 cuts) | 55. Cut flowers (3) |
| 34. Calendula-marigold (3) | 44. Flowering creeper (3 cuts) | 56. Cut flowers, of any kind (5) multiple or single |
| 35. Fuchsias, single (3) | 45. Foxgloves (1 Stem) | Champion Bloom of Classes |
| | 46. Delphinium (1 Stem) | 29 – 62 Sash |
| | 47. Iris, any variety (3 Stems) | |

NATIVES

to use separate bottle for each class

- | | | |
|-------------------------------|-------------------------------|----------------------------|
| • Champion Native Bloom Sash | 61. South African natives (6) | 63. Australian natives (6) |
| 60. South African natives (3) | 62. Australian natives (3) | |



SECTION X – FLORAL ART

Steward: Sue Vanderheul, Irene Dickens

Floral Art Perpetual trophy awarded the most points in designated section, Open 2021, Novice 2022, Intermediate 2023. Perpetual trophy donated by the Garner family in memory of Dolly Pell.

Fresh Sections - All classes, all sections - Fresh flowers must be used, and any horticultural plant material allowed - (no artificial foliage allowed). Embellishments and paint can be used with discretion in all classes and sections.

Artificial Sections - All classes, all sections Artificial flowers to be used and any horticultural plant material - (no artificial foliage allowed). Floral Art will be judged under AFAA rules.

Staging of exhibits to be completed by 6pm Thursday night 7th November

NOVICE FLORAL ART

Allocated Bench Space – 60cm / 2ft

If you have won 3 championships in the Novice Section at your show– you must then compete in the Intermediate Section.

Fresh Section

1. Still Life
2. Sta mobile – incorporating threading technique

Artificial Section

3. Informal European Parallelism
 4. Line on Line (not massed)
- Best Floral Exhibit Sash : Most Points \$20

INTERMEDIATE FLORAL ART

Allocated Bench Space – 60cm / 2ft

If you have won 3 championships in the Intermediate Section at your show– you must then compete in the Open Section

Fresh Section

5. Mass and Space
6. Sta mobile – incorporating pinning technique

Artificial Section

7. Informal European Parallelism
 8. Hograth Curved Massed Lined
- Best Floral Exhibit Sash : Most Points \$20

OPEN FLORAL ART

Allocated Bench Space – 76cm / 2' 6"

Fresh Section

9. Any type of European design - please title
10. A design incorporating at least 3 contemporary techniques
11. With strings attached

Artificial Section

12. Mass and Space
 13. Minerva – massed line
- Best Floral Exhibit Sash : Most points \$20

Floral Art Open Champion 2021. Donated by the Garner Family in memory of Dolly Pell.

The Garner Family
are proud to support the
Indoor Section in memory of
Dolly Pell

FOSTERS FOODLAND

Great food lives here.

A TRADITION OF QUALITY SERVICE

*Where you can still have help taking your groceries to the car
and ask for exactly what you want from the butcher*

Kentish Place, Millicent • Phone 8733 2106

SECTION Y – SCRAPBOOKING

Exhibit to be created/made by exhibitor

1. Children single page
 2. Special Occasion – single page
eg. Wedding/Birthday
 3. Heritage Story – single page
 4. Open subject – single page
 5. No photo/journaling only – single page
 6. Heritage History – single page
 7. Children – double page
 8. Pet/Animal – single page
 9. Special occasion – double page
eg. Wedding/Birthday
 10. No photo/journaling only – double page
 11. Heritage History – double page
 12. Open subject – double page
 13. Pet/Animal – double page
 14. Card – invitation etc Birthday, Christmas, Open
 15. Article of scrapbooking off the page, eg Canvas, mini album or tin
- Best Exhibit – Sash

SECTION W – WOODWORK, METAL WORK, WOODTURNING & PLASTICS

Classes 1-7 sizes for furniture are no larger than 1m length x 50cm width & your choice of height. LIMIT: 2 entries per person per class

WOODWORK

1. Any article of furniture
 2. Table Light Sculpture in wood
 3. Seat
 4. Article of recycled timber useful or aesthetic
 5. Clock
 6. Any article not listed
 7. Small item of wood work
- Best Woodwork Exhibit Sash

WOODTURNING

8. Bowl
 9. Candlestick Stand
 10. Any article not listed
 11. Vase - any type
 12. Small item of woodturning
- Best Woodturning Exhibit Sash

METALWORK

13. Any welded item over 35cm
 14. Any welded item under 35cm
 15. Any article under 35cm square
 16. Any article over 35cm square
 17. Plastics – any article
- Best Metalwork Exhibit Sash
 - Best Plastic exhibit Sash

WIND FARM COMPETITION

Entry fee: FREE

For Primary & Secondary Students 18 Years & Under Two entry per person

Same conditions apply as for indoor children's section

JUNIOR PRIMARY (R-3)

1. Drawing
 2. Painting
 3. Model
- Best Exhibit Sash

PRIMARY (YRS 4-7)

4. Drawing
 5. Painting
 6. Model
- Best Exhibit Sash

SECONDARY

7. Drawing
 8. Painting
 9. Model
- Best Exhibit Sash

Points for aggregates awarded as follows: 1st – 4 points, 2nd - 2 points

Prize Money - 1st \$2, 2nd \$1



REFRIGERATION | AIR CONDITIONING | ELECTRICAL

SCHOOL WORK DISPLAY

A non-competitive display of schoolwork will be featured on Friday and Saturday. This display comes from local school children as part of their school work and is proudly displayed for all to see. It looks like they have lots of fun collaborating this display. The work is from all ages and we encourage you to have a look.

KINDERGARTEN SECTION

Classes 1-7 Winner Most Points - Best Exhibit – Sash

For children under 5yrs of age at time of the show. **Must be child's own work.**

Two entries per child per class only.

- | | | |
|-----------------|-------------------|--------------------------|
| 1. Any painting | 3. Any craft work | 5. Vase of Mixed Flowers |
| 2. Any drawing | 4. 6 Hen Eggs | |

INDOOR CHILDREN'S SECTION

For Primary & Secondary Students 18 Years & Under

All Entries - 50 cents. Entries: PO Box 202, Millicent 5280.

Must be child's own work – age appropriate

- All exhibits to be at the hall on Thursday before the show, 8:30am to 6:00pm. Stewards will be in attendance to receive entries during this time.
- Late Entries Not Accepted
- Indoor section judging - from 6pm Thursday / Friday 9.30am - 12 noon.
- Money & trophies for all classes can be collected Saturday from 4.30 - 5pm – Main Hall
- Exhibitors to put Primary or Secondary and Year Level on the back of their work plus the section and class number.
- Points for aggregates awarded as follows: 1st – 4 points, 2nd - 2 points
- Prize Money - 1st \$2, 2nd \$1



SECTION CH. K A - ART

Steward: Carol Garner, Sue Vanderheul, Irene Dickens

Artists names covered, entry tickets attached & ready to hang. No more than 2 entries per class, per person. No picture larger than 60cm x 60cm

JUNIOR PRIMARY (R-3)

1. Drawing
 2. Painting
 3. Portrait – any medium
- Special Rotary Prize
 - Most Outstanding Exhibit Sash & \$15
 - Runner Up Sash & \$5 (classes 1-3)

PRIMARY (YRS 4 -7)

4. Drawing
 5. Painting
 6. Cartoon
 7. Portrait – any medium
- Special Rotary Prize
 - Most Outstanding Exhibit Sash & \$15
 - Runner Up Sash & \$5 (classes 4-7)

SECONDARY

8. Drawing
 9. Painting
 10. Artist Choice, Theme: Millicent
 11. Cartoon Art
 12. Portrait – Any Medium
 13. Product design A4
 14. Graphic design A4
 15. Environmental design A4
 16. Computer graphic poster A4
- Special Rotary Prize
 - Most Outstanding Exhibit Sash \$25
 - Secondary Runner Up Sash & \$15

SECTION CH. K C - CRAFT

Stewards: Sue Vanderheul, Irene Dickens

Limit 2 entries per class. Artists names covered, entry tickets attached.

No Exhibit to exceed 30cm x 30cm x 30cm

LEGO one entry per person only

JUNIOR PRIMARY (R-3)

1. Artistic Hand Written Poem
 2. Mixed Collection – to be shown on low box or tray
 3. Lego, Knex or similar medium.
 4. Handmade Doll or Teddy Bear – made from material
 5. Any Other Craft
- Best Exhibit - Sash

PRIMARY (YRS 4-7)

6. Artistic Hand Written Poem
 7. Mixed Collection – to be shown on low box or tray
 8. Lego, Knex or similar medium
 9. Handmade Doll or Teddy Bear – made from material
 10. Any other Craft
 11. Any item of jewellery
- Best Exhibit - Sash

SECONDARY

12. Artistic Hand Written Poem
 13. Mixed Collection – to be shown on low box or tray
 14. Lego or similar medium
 15. Any other Craft
 16. Any item of jewellery
- Best Exhibit - Sash



Woolworths
Australia's fresh food people

Millicent Woolworths

Millicent

34 Davenport Street Millicent SA 5280

t: (08) 8741 8950

5647Millicent@woolworths.com.au

Customer Care: 1300 767 969

Shop online woolworths.com.au



SECTION CH. L – PHOTOGRAPHY

Steward: Carol Garner

Conditions of Entry for Junior Primary / Primary

- LIMIT 2 entries per person per class
- All photographs are to be taken by exhibitor
- All photographs are to be mounted on black or white card only
- **NO MATT BOARDS OR FRAMES**
- All entries to have name and class number written on the back with entry ticket attached
- All photographs to be 6" x 4" (10 x 15cm) unless otherwise stated as enlargements
- Max of 2cm card border around photograph **ONLY**
- Collections to be 5 photos only mounted on card no larger than A3 (42 x 30cm)
- No laminated photographs
- **Entry fee 50c - Prize money 1st \$2, 2nd \$1**

JUNIOR PRIMARY (R-3)

1. Any subject Black/White/Sepia only

COLOUR PRINTS

2. Landscape or Waterscape
 3. People
 4. My Favourite Pet
 5. Open - Enlargement
 6. Collection of 5 photos relating to the same subject
 7. Open Normal Print
- Best Print – Sash
 - Most Winner Points

PRIMARY (YRS 4-7)

8. Open – Black & White Sepia
9. Open Normal Print - Black & White / Sepia only

COLOUR PRINTS

10. Landscape or Waterscape
 11. People including portraiture
 12. Animals
 13. Action
 14. Open Enlargement
 15. Collection of 5 photos relating to the same subject
 16. Open Normal Print
- Best Print – Sash
 - Winner Most Points



SECONDARY – PHOTOGRAPHY

Stewards: Carol Garner

Conditions of Entry for Secondary

- MAXIMUM OF 2 prints may be entered per class by any single exhibitor
- All photographs are to be taken by exhibitor
- All photographs are preferred to be mounted on black or white card
- **IMAGES MAY BE MOUNTED ON MATT BOARD OR CARD – NO FRAMES TO BE USED (APPLIES TO SECONDARY'S ONLY)**
- All entries to have name and class number written on the back with entry ticket attached
- PRINT SIZES: Maximum 20.3cm x 25.5cm (8" x 10")
- Max of 3cm card border around photograph only
- No laminated photographs
- Previous winning entries at the Millicent Show awarded in any class are disqualified from re-entry
- A violation of any of the foregoing rules automatically disqualifies the print from the competition
- **Entry fee 50c - Prize money 1st \$2, 2nd \$1**

COLOUR PRINTS

1. Sunset or Sunrise
2. Friends and/or family mounted on one card
3. Wildlife or Domestic animal
4. Collection of 3 photos of same theme to be
5. Any other subject other than above

BLACK AND WHITE PRINTS

6. My friends and/or family
7. Any other subject other than above

CREATIVE PHOTO

8. (a) Creative Photo (including Computer enhancement and Special effects, black and white or a colour or combination of both
 - Most Winner Points
 - Best Print – Sash

SECTION CH. N - HANDICRAFTS

SECONDARY SECTION ONLY (Limit 2 entries Per Class)

- Winner Most Points - \$10 • Best Exhibit - Sash

SEWING

1. Garment made by student
2. Garment for a child, made by student
3. Soft toy, any kind
4. Any article

PLASTICS

5. Any article made by exhibitor



*Servicing the South East of South Australia's
beautiful Limestone Coast region*

For all Sales enquires, contact:

Fiona (0407 976 908) or Melissa (0427 558 620)

For all Rental & Property Management enquires,
contact: Michelle or Amanda (87333990)

SECTION CH T – POT PLANTS

Steward: Irene Dickens

CHILDRENS SECTION

• Most Points \$10 • Best Exhibit Sash

1. Pelargonium
2. Geranium
3. Primula 4. Fuchsia
5. Plant – any in bloom
6. Hanging plant
7. Best Dressed Rubber boot -
1st \$50 donated by Irene Dickens
8. Succulent up to 8" pot
9. Cacti 4" pot or smaller
10. Cacti pot larger than 4"
11. Fern – any type
12. Any other plant not listed

SECTION CH. U - CUT FLOWERS

Stewards: I Dickens, Sue Vanderheul

When more than one is shown, they must be of distinct varieties & colours unless otherwise stated.

All containers supplied. Limit two entries per class.

*** NO LATE ENTRIES WILL BE ACCEPTED ENTRIES CLOSE AT 5pm Friday 1st Nov**

*** ARRANGEMENTS – CHILDREN TO DO THEIR OWN WITH NO HELP FROM PARENTS
"Champion Rose of the Show Voucher"**

Donated by McCourts Garden Centre, Open to Primary & Secondary

Voucher Valued at \$50.00

PRIMARY SECTION

1. Cut flowers (3), garden varieties
 2. Cut flowers (6), garden varieties
 3. Pansies (3)
 4. Geraniums (3) single
 5. Rose any variety, any colour (1)
 6. Sweet peas (3)
 7. Roses (3) distinct colours
 8. Pink Flowers (3) distinct varieties
 9. Bunch of mixed daisies
 10. Vase of mixed flowers (own vase)
 11. Yellow flowers (3) distinct varieties
 12. Blue or Purple flowers (3) distinct varieties
 13. White flowers (3) distinct varieties
 14. Australian/South African Native flowers (3)
distinct varieties
- Primary Best Exhibit Sash
• Primary Winner Most Points \$10

SECONDARY SECTION

15. Cut flowers (3), garden varieties
16. Rose Buds (3)
17. Floral Bunda (1stem)
18. Roses (3) distinct colours
19. Miniature Roses (1)
20. Vase of mixed flowers (own vase)
21. Red Flowers (3) distinct varieties
22. Blue or Purple flowers (3) distinct varieties
23. White flowers (3) distinct varieties
24. Australian/South African Native flowers
(3) distinct varieties
25. Rose any variety, any colour (1)
• Secondary Best Exhibit – Sash
• Secondary Winner Most Points \$10



McCOURTS
GARDEN CENTRE
& FLORIST

Proud Sponsor of the
Champion Rose of the Show
& Rose of the Show
(Children's Section)

OPEN 7 DAYS • 48 DAVENPORT ST, MILLICENT PHONE: 8733 4566

SECTION CH. X - FLORAL ART

Stewards: I Dickens, Sue Vanderheul

- * No arrangement to be prepared before entry into the hall.
- * Parents will not be allowed into the preparation area of the hall.
- * A 30-minute warning bell will be sounded – prior to 6pm.
- * Children must do their preparation in the Main Hall under the supervision of Stewards from 3pm to 6pm Thursday.
- * Exhibitors supply their own requirements.
- * Fresh flowers must be used and any other horticultural material – both Primary and Secondary
- * Limit two entries per class.

PRIMARY SECTION

Allocated space 40cm

1. A4 size Miniature Garden
 2. Floral Saucer in sand
 3. A design in a bottle
 4. A design in an egg cup
 5. A design in a teapot
- Best Exhibit Sash - Winner most points \$10.

SECONDARY SECTION

Allocated space 60cm

Fresh Flowers must be used

6. Miniature farm
 7. Design in a gumboot
 8. Design in a box/boxes
 9. Design in a teapot
 10. Necklace – out of horticultural material
- Best Exhibit Sash – Winner most points \$10

SECTION CH. Y – SCRAPBOOKING

Exhibit to be created/made by exhibitor

PRIMARY YEAR 1-3

1. Children single page
 2. Pets/Animal - single page
 3. Open - Single page
 4. Special Occasion - single page
 5. Open double page
 6. Pets/Animal - double page
 7. Children double page
 8. Special Occasion - double page
 9. Cards - Invitation/Christmas/Open
 10. Article of scrapbooking off the page. eg. Canvas/Mini Album/Tin etc
- Best Exhibit – Sash

PRIMARY YEAR 4-7

11. Children single page
 12. Pets/Animal - single page
 13. Open - Single page
 14. Special Occasion - single page
 15. Open double page
 16. Pets/Animal - double page
 17. Children double page
 18. Special Occasion - double page
 19. Cards - Invitation/Christmas/Open
 20. Article of scrapbooking off the page eg. Canvas/Mini Album/Tin etc
- Best Exhibit – Sash

SECONDARY

21. Children single page
 22. Pets/Animal - single page
 23. Open - Single page
 24. Special Occasion - single page
 25. Open double page
 26. Pets/Animal - double page
 27. Children double page
 28. Special Occasion - double page
 29. Cards - Invitation/Christmas/Open
 30. Article of scrapbooking off the page. eg. Canvas/Mini Album/Tin etc
- Best Exhibit – Sash

SECTION CH. Z – JUNK YARD ART

Sculpture, Metal, Wood

Stewards: S Hutchesson Exhibit to be created/made by exhibitor

PRIMARY YEAR 1-3

1. Item from metal
 2. Junk Yard Art up to 1mt
 3. Any garden object
 4. Any Sculptured item
 5. Junk Yard Wood item
- Best Exhibit Sash

PRIMARY YEAR 4 -7

6. Item from metal
 7. Junk Yard Art up to 1mt
 8. Any garden object
 9. Any Sculptured item
 10. Junk Yard Wood item
- Best Exhibit Sash

SECONDARY

11. Item from metal
 12. Junk Yard Art up to 1mt
 13. Any garden object
 14. Any Sculptured item
 15. Junk Yard Wood item
- Best Exhibit Sash

HORSES IN ACTION - HORSE EVENTS 6th & 7th November 2021

Conveners: Lynda Field: Hack/ Stockman's Challenge 0409 394 099

Keirrie Bowman: Showjumping 0417 847 662 Emily Walker: Topsy Ring

ENTRY Via EVENT SECRETARY ONLY www.eventsecretary.com.au

Entries open 1st October - close Thursday 28th October 21

Program www.millicentshow.com

Waiver Forms available online - please print and email to showoffice@gmail.com

ROAD CLOSED: ENTRY VIA TANTRAMS LANE WILL BE CLOSED - FRIDAY 5th NOVEMBER 6pm - 8pm and SATURDAY 6th - 2pm - 4pm for Chris Sperou Aerobatic Display.

TICKETING:

ALL COMPETITORS MUST BE MEMBERS OF THE MILLICENT AH & P SOCIETY

Exhibitor Membership Adult \$15 (unless you wish to be a fully paid member).

Children (5 - 17) \$5, Children under 5 FREE

- Entry for show horse classes \$4/class or a day ticket for \$15/horse.
- You will receive a number for each horse which must be displayed on the horse while competing. N/A for showjumping
- All competitors must fill out a disclaimer and entry form before competing in any class at the Millicent show - at www.eventsecretary.com.au Membership & waiver available with entry forms on-line
- Committee reserve the right to cancel or alter classes
- Pony Club Classes horses & riders must be financial members & qualified with a Pony Club
- Pony Club cards must be produced on request by event officials
- Pony Club classes with no age limit stated are open to any rider

FIREWORKS

- Horse competitors staying overnight are expected to be with their horses during the **FIREWORKS** on Friday night. A half hour warning will be given over the sound system on Friday evening.

THE FIREWORKS WILL START AT APPROX 9PM

SATURDAY: Casual Showjumping Ring - Hack Ring - Breed Ring - Pony Club - Local

SUNDAY: Stockman's Challenge - Hack Ring - Harness - Casual Showjumping Ring - Topsy Ring

THE BRIAN EDWARDS MEMORIAL

Donated by David Edwards & family for the most aggregate points gained by a rider under 15yrs. The winner will receive the main trophy to keep for one year – to be returned to the show office before the next show. They will also receive a small trophy to be retained by the winner.

**** Denotes specific qualifying events**

Previous Winners

1986	Kylie Wake	1998	Grace Wood	2010	Bella Poulish
1987	Lachlan Wake	1999	Amelia Whitehead	2001	Bailey Poulish
1988	Kristy Weise	2000	Priscilla Baker	2012	Bella Poulish
1989	Kerry Bowman	2001	Maddie Willoughby	2013	Bella Poulish
1990	Kerry Bowman	2002	Hannah Kent	2014	Bailey Poulish
1991	Natasha Fix	2003	Hannah Allwright	2015	Kayla Jones
1992	Amy Wood	2004	Hannah Allwright	2016	Demi Jones
1993	Emma Woolston	2005	Emma McCrae	2017	Mia Dyson
1994	Natasha Fix	2006	Maddison Thwaites	2018	Bella Poulish
1995	Amy Wood	2007	El-Show cancelled	2019	Laura Uotila
1996	Caddie Mules	2008	Hannah Allwright		
1997	Angus Wood	2009	Jessica Kent		

RING 1: HACK, LOCAL RING SATURDAY 6TH NOVEMBER - 9AM START

SE of SA Border Show Societies - Junior Association Trophy -
Hack 16 Hands & over in the qualifying ring (2 shows)

ALL COMPETITORS MUST BE MEMBERS OF THE MILLICENT AH & P SOCIETY

Millicent AH & P Society Horse Handling Waiver needs to be signed.

Exhibitor Membership Adult \$15 (unless you wish to be a fully paid member). Children (5 - 17) \$5, Children under 5 FREE. **Hack Ring / Local Ring \$15 Day Pass or \$4 per class**

All exhibits must be registered with appropriate breed society, except coloured horses, may compete in more than 1 breed if so registered, papers may be requested.

All Champions will receive a Etched Glass made by DESIGNS By DONNA.

Champion Pony - sponsor Alli Newley, Champion Show Hunter - sponsor Amanda Munn. Prizemoney for all Show Hunter Pony Classes - donated by Elisha Kent. Champion Show Galloway - sponsored by Alli Newley, Champion Show Hunter sponsored by Many McIntyre.

On-line entries only - www.eventsecretary.com.au

**** Denotes Brian Edwards Memorial Qualifying events**

- 1 Smartest on Parade 16yrs & under
- 2 Smartest on Parade 17yrs & over
- 3 Show Pony ne 12hh
- 4 Show Pony o 12hh ne 12.2hh
- 5 Show Pony o 12.2hh ne 13hh
- 6 Show Pony o 13hh ne 13.2hh
- 7 Show Pony o 13hh ne 14hh
- 8 Lightweight Show Pony
- 9 Heavyweight Show Pony
- 10 Open Show Pony

CHAMPION & RESERVE SHOW PONY

- 11 Show Hunter Pony ne 12hh
- 12 Show Hunter Pony o 12hh ne 13hh
- 13 Show Hunter Pony o 13hh ne 14hh
- 14 Lightweight Show Hunter Pony
- 15 Heavyweight Show Hunter Pony
- 16 Open Show Hunter Pony

CHAMPION & RESERVE SHOW HUNTER PONY

Show Hunter Classes Sponsored By Elisha Kent

NAMPARA MASQUARADE - (Dudley) *

17 Child's Pony ne 14hh (rider under 16yrs).

Trophy donated by the SMITH FAMILY 'In loving memory of our much loved pony'

- 18 Show Galloway o 14hh ne 14.2hh
- 19 Show Galloway o 14.2hh ne 15hh
- 20 Lightweight Show Galloway
- 21 Heavyweight Show Galloway
- 22 Open Show Galloway

CHIPPENHAM SCEPTRE MEMORIAL CHAMPION & RESERVE SHOW GALLOWAY

- 23 Show Hunter Galloway o 14hh ne 14.2hh
- 24 Show Hunter Galloway o 14.2hh ne 15hh
- 25 Lightweight Show Hunter Galloway
- 26 Heavyweight Show Hunter Galloway

27 Open Show Hunter Galloway CHAMPION & RESERVE SHOW HUNTER GALLOWAY

- 28 Show Hack o 15hh ne 15.2hh
- 29 Show Hack o 15.2hh ne 16hh
- 30 Show Hack o 16hh ne 16.2hh
- 31 Show Hack o 16.2hh
- 32 Lightweight Show Hack
- 33 Heavyweight Show Hack
- 34 Open Show Hack

ZIRKA CLOUD MEMORIAL CHAMPION & RESERVE SHOW HACK

- 35 Show Hunter Hack o 15hh ne 15.2hh
- 36 Show Hunter Hack o 15.2hh ne 16hh
- 37 Show Hunter Hack o 16hh
- 38 Lightweight Show Hunter Hack
- 39 Heavyweight Show Hunter Hack
- 40 Open Show Hunter Hack o 15hh

CHAMPION & RESERVE SHOW HUNTER HACK

- 41 Rider under 8yrs (may be led)**
- 42 Rider 8yrs and under 10yrs**
- 43 Rider 11yrs and under 15yrs**
- 44 Rider 15yrs and under 18yrs
- 45 Rider 18yrs and under 25yrs
- 46 Rider 25yrs and under 35yrs
- 47 Rider 35yrs & over

Champion Junior Rider Classes 40 - 43

Sponsored by the Rich Family

Champion Senior Rider Classes 44 - 46

Sponsored by Mount Gambier Hay Run

LUNCH BREAK

RING 2: LOCAL HACK & PONY CLUB RING - 10.30AM START

Entry \$4 per class or \$15 day ticket

Hack Events (riders in these events not eligible in ring 1 except for rider classes).

Local Events

- "Local" is taken as horse and rider residing within the Wattle Range Council districts
- Snaffle bits only
- 1. Local Pony NE 12hh
- 2. Local Pony O 12hh NE 13hh
- 3. Local Pony O13hh NE 14hh
- 4. Local Mount 14hh NE 15hh
- 5. Local Mount 15hh NE 16hh
- 6. Local Mount over 16hh

CHAMPION & RESERVE CHAMPION LOCAL HORSE OR PONY

Winners RUG donated by VONDUE PLUMBING Glencoe

7. Local Rider 10yrs & U**
8. Local Rider 11 yrs. & U15yrs**
9. Local Rider 15yrs & U17yrs
10. Local Rider 17yrs & U20yrs
11. Local Rider 20 yrs & U25 yrs
12. Local Rider Over 25 yrs.

CHAMPION & RESERVE CHAMPION LOCAL RIDER

Champion Local Rider Sponsored by JW Equine Therapy

PONY CLUB EVENTS

Pony Club Rules apply. Snaffle Bits only.

- Must be PC Members & Mounts, dressed in full pony club uniform
- 1. Smartest On Parade PC Mount NE 14hh
- 2. PC Mount NE 13hh
- 3. PC Mount 13hh & NE 14hh
- 4. Pony Club Smartest On Parade O 14hh
- 5. Pony Club Mount 14hh & NE 15hh
- 6. Pony Club Mount 15hh & NE 16hh
- 7. Pony Club Mount O16hh

CHAMPION & RESERVE CHAMPION PC MOUNT
Champion PC rug donated by Melissa Armfield
- The Shearer's Cook Cafe

8. PC Rider 10yrs & Under**
9. PC Rider 11yrs & under 13**
10. PC Rider 13yrs & under 15yrs**
11. PC Rider 15yrs & under 18yrs
12. PC Rider O 18yrs

CHAMPION & RESERVE CHAMPION PC RIDER **Sponsored by RDA Mt Gambier**

13. Pair Pony Club Riders Open
14. Pair of Pony Club Horses Open

**** Denotes Brian Edwards Memorial Qualifying events**

ALL CHAMPION WINNERS ELIGIBLE FOR THE SUPREME RIDDEN EXHIBIT

The 2 Rings - Judges will combine to judge the Supreme Ridden Exhibit.

CM & CE WATSON PERPETUAL SHIELD SUPREME CHAMPION RIDDEN EXHIBIT

All Champions eligible to compete including Hacks, Hunters, Local and Pony Club events.

SUPREME CHAMPION RIDDEN EXHIBIT WILL RECEIVE

Perpetual Trophy, Sash and Garland

Garland Sponsored by BR & DA CLAYSON & ML HARRISON

FREE Photo shoot from Nicole Cleary Photography

Rotary



RING 3: LED BREED

Saturday 6th November 9am Start

All exhibits must be registered with appropriate breed society, except coloured horses, may compete in more than 1 breed if so registered, papers may be requested.

Day Pass \$15 or \$4 per class

Exhibitor Membership Adult \$15 (unless you wish to be a fully paid member).

Children (5 - 17) \$5, Children under 5 FREE

- 1 Led Coloured Female
- 2 Led Coloured Male
- 3 Led Arabian Female
- 4 Led Arabian Male
- 5 Led QH/Aust Stock Horse Female
- 6 Led QH/Aust Stock Horse Male
- 7 Led Warmblood Horse Female
- 8 Led Warmblood Horse Male
- 9 Led Standardbred Female
- Sponsored by Bouderae Standardbreds
- 10 Led Standardbred Male
- Sponsored by Bouderae Standardbreds
- 11 Led Thoroughbred Female
- 12 Led Thoroughbred Male
- 13 Led Heavy Horse Female
- 14 Led Heavy Horse Male
- 15 Led Any Other Breed o 14hh Female
- 16 Led Any Other Breed o 14hh Male

CHAMPION & RESERVE LED HORSE BREED

Sponsored by Borderview ASH

- 17 Led APSB Female
- 18 Led APSB Male
- 19 Led Welsh or Part Welsh Female
- 20 Led Welsh or Part Welsh Male
- 21 Led Riding Pony Male
- 22 Led Riding Pony Female
- 23 Led Shetland/Mini/Small Horse Female
- 24 Led Shetland /Mini/Small Horse Male
- 25 Led Any Other Pony Breed Female
- 26 Led Any Other Pony Breed Male

CHAMPION & RESERVE LED PONY BREED

Sponsored by Amanda Munn

- 27 Led Youngstock Yearling or Foal Female
- 28 Led Youngstock Yearling or Foal Male
- 29 Led Youngstock 2year old Female
- 30 Led Youngstock 2 year old Male
- 31 Led Youngstock 3 year old Female
- 32 Led Youngstock 3 year old Male

CHAMPION & RESERVE LED YOUNGSTOCK RIDDEN BREED CLASSES

Sponsored by Rein It In Equine Photography

- 33 Ridden APSB
- 34 Ridden Welsh/Part Welsh
- 35 Ridden Riding Pony
- 36 Ridden Shetland
- 37 Ridden Coloured
- 38 Ridden Arabian
- 39 Ridden QH/ASH
- 40 Ridden Warmblood
- 41 Ridden Standardbred
- 42 Ridden Thoroughbred
- Sponsored by Bouderae Standardbreds
- 43 Open Ridden Standardbred
- 44 Walk/Trot Ridden Standardbred

CHAMPION & RESERVE RIDDEN BREED

Sponsored by The Jones Family

LUNCH BREAK

SUPREME LED EXHIBIT

**Winner to Receive Sash,
Garland & Prize**

**Sponsored by Flying R Stud, Sharon
Cockburn & Amy Litchfield**



TOPSY RING

Sunday 7th November 2021 - START at 10.00am

Entries: www.eventsecretary.com.au

ALL COMPETITORS MUST BE MEMBERS OF THE MILLICENT AH & P SOCIETY

Millicent AH & P Society Horse Handling Waiver needs to be signed & accompany entry form.

Exhibitor Membership Adult \$15 (unless you wish to be a fully paid member).

Children (5 - 17) \$5, Children under 5 FREE

- Safety approved helmets & boots to be worn.
- For Riders who DO NOT compete in other rings
- Riders should be at least 3yrs & under 16yrs
- Riders don't need to canter, it's all about having fun
- Classes to be altered/combined where numbers are more suitable (at judges discretion)
- Entry Fee \$4 per class or \$15 entry ticket for the day.

Events 1 to 3 to be LED (unmounted/saddle not required) (can leave saddle on if preferred)

1. Led Combination Pony ne 10 hands
2. Led Combination Pony/horse 10 hands to 14 hands
3. Led Combination Pony/Horse over 14 hands

EVENTS 6 TO 13 ALL RIDDEN- CAN BE ASSISTED OR LED

4. Rider Class 3 years to and including 5 years
5. Rider Class 6 years to and including 9 years
6. Rider Class 10 years to and including 16 years
7. Pony with longest mane and tail ne 12 hands
8. Pony/horse with longest mane and tail over 12 hands
9. Most suitable learner pony under 12 hands
10. Most suitable learner pony/horse 12 hands and over
11. Obstacle event pony ne 12 hands
12. Obstacle event pony/horse over 12 hands

10 MINUTE BREAK TO GET DRESSED UP

13. Fancy Dress – every entrant MUST have a competent assistant/leader



Complete engineering services covering all aspects of machining, fabrication and site projects.

John Shanks 0409 214 934 David Shanks 0400 254 590

B.J. + K.A. WALKER



8017 SOUTHERN PORTS HIGHWAY MAGAREY SA 5280
LIMESTONE COAST B101

P.O. BOX 62 BEACHPORT SA 5280

KEN OR BETTY PHONE (08) 8735 8177 FAX (08) 8735 8178

MILLICENT SHOW STOCKMAN'S CHALLENGE

Sunday 7th November 2021 – 9.00am Start

Convener – Lynda and Wayne Field 0409394099 thetackroom@bigpond.com

SE of SA Border Show Societies - Association Trophy 2 - Horseman's/Stockmans Challenge (2 shows)

- **Entries Close Thursday 28th October 2021**
- We will accept entries on the day with an EXTRA SURCHARGE of \$20
- Entries via EVENT SECRETARY ONLY www.eventsecretary.com.au
- Please Print Waiver form and email to thetackroom@bigpond.com

ALL COMPETITORS MUST BE MEMBERS OF THE MILLICENT A H & P SOCIETY

Exhibitor Membership Adult \$15 (unless you wish to be a fully paid member).

Children (5 - 17) \$5, Children under 5 FREE

These fees are to be included with entry fees

PRIZEMONEY – 60% PAYBACK FROM ENTRIES & OR PRODUCT TO THAT VALUE

Place to 3rd in each phase, Sashes to 6th Overall in each section

LIMESTONECOAST TRI-SERIES CHALLENGE. Points gained at Kingston Show, Penola Show and Millicent Show 2021.

OPEN SECTION – Entry Fee \$40 Sponsored by Myarra ASH Stud

NOVICE SECTION – Entry Fee \$30 Sponsored by The Tack Room

ENCOURAGE SECTION – Entry Fee \$30 Sponsored by Penni Higginson

JUNIOR SECTION (16rs & under) – Entry Fee \$25 Sponsored by Merchy's Laser Engraving

HIGH POINT AWARDS FOR – Quarter Horse, Australian Stock Horse, Thoroughbred & Local Rider

- Working ASH Pattern
- Obstacle Coarse
- Time Trial
- Whip Crack

Conditions of Entry:

- 1 Challenge is Open to all horses, all breeds welcome
- 2 One Horse, One Rider combination in one section only
- 3 May compete on more than one horse in the same section only, full entry fee applies for the second horse
- 4 Junior riders must be able to ride unassisted
- 5 Stallions welcome, but must be handled and ridden by rider over 18years, also must be double tied and or hobbled whilst not ridden
- 6 Snaffle bit only , no tie downs, no drop noseband or no rings are to be used
- 7 Expected dress code – neat tidy clothing, approved safety helmets and riding boots must be worn
- 8 No unrestrained dogs on the grounds at any time
- 9 Personal Insurance for riders is recommended
- 10 Acceptance of risk must be signed for entry to be accepted
- 11 The committee reserves the right to alter the program without notice
- 12 HAVE A WONDERFUL TIME AND HAVE FUN!



JAVA CAFE 

**SUNDAY 7TH NOVEMBER
HARNESS RING 10.00AM START**

Convener: Laura Wadsley 0403 493 077

Entry fee \$4 per class - Prizes - product/vouchers. **Entries via www.eventsecretary.com.au**

Waiver forms - to be completed and signed with entry. These are available on line

ALL COMPETITORS MUST BE MEMBERS OF THE MILLICENT AH & P SOCIETY.

Exhibitor Membership Adult \$15 (unless you wish to be a fully paid member).

Children (5 - 17) \$5, Children under 5 FREE

SPONSORS: The Harness Gang, Wadsley Family, Helen Cook, Horseland Mount Gambier

- 1 Smartest on Parade
- 2 Viceroy Turnout
- 3 Pleasure Turnout
- 4 Novice Pony or Horse
- 5 Hackney /part Hackney Pony
- 6 Hackney/part Hackney Horse

CHAMPION HACKNEY

Proudly sponsored by Helen Cook

- 7 Pony under 10hh
- 8 Pony 10hh & ne 12hh
- 9 Pony 12hh & ne 14hh

CHAMPION & RESERVE HARNESS PONY

Proudly sponsored by Horseland Mt Gambier

- 10 Horse over 14hh (excluding heavy horse)

- 11 Heavy Horse in harness

CHAMPION & RESERVE CHAMPION HARNESS HORSE

Proudly sponsored by the Wadsley Family

- 12 Junior Driver under 18yrs

- 13 Adult Driver 18yrs – 49yrs

- 14 Senior Driver 50yrs & over

CHAMPION & RESERVE CHAMPION DRIVER

Proudly sponsored by The Harness Gang

- 15 Pleasure Pony ne 14hh

- 16 Pleasure Horse 14hh & over

- 17 Best Educated Horse or Pony

- 18 Timed Obstacle Course



Kent Properties Pty Ltd
Proudly supporting the Showjumping



(08) 8733 2645 | 1a Kentish Place, Millicent
theshearerscook@gmail.com
Find us on Facebook & Instagram

*MBCA 2018 Winner Outstanding Business Award -
Hospitality and Tourism*



Millicent
Racing Club

"Leading the Way"

Millicent Cup - Sunday, 29th May 2022
at Mt Gambier

www.theracessa.com.au

SHOWJUMPING – CASUAL RING

Saturday 6th & 7th November

Convener: Kerrie Bowman: Showjumping 0417 847 662

Millicent AH & P Society Horse Waiver needs to be signed & accompany entry forms.

ENTRIES via EVENT SECRETARY ONLY www.eventsecretary.com.au

Exhibitor Membership Adult \$15 (unless you wish to be a fully paid member).

Children (5 - 17) \$5, Children under 5 FREE. Entries Open 1st October - close 28th October

Thanks to our sponsors – Millicent Racing Club, South East Property Sales & Management, Denis Manhood, Java Cafe, Kent Properties, Millicent Tyre Centre, Wattle Range Trading, The Produce Store, Laucke Feeds, Fourwinds Performance Horses, Teana Kent.

MILLICENT RACING CLUB – OTT Rug presented to the best performed horse & rider. Riders to nominate 2 classes for their horse on each day to be eligible. Saturday 9th - classes 1 to 6. Sunday 7th - classes 1 - 5.

Saturday 6th November 8-30am start

Classes judged under Table 238.2.2 - unless otherwise stated

- Class 1. Casual 50cm Optimum time - Ribbon 1st & product, 2nd, 3rd - Entry fee \$5
- Class 2. Casual 60cm - Ribbon 1st & product, 2nd, 3rd - Entry fee \$5
- Class 3. Casual 70cm One Round Stakes Article 239 Entry fee \$5 Prize money \$20+ bag feed, \$15, \$10, \$5
- Class 4. Casual 80cm Prize money \$40, \$30, \$20, \$10 Entry Fee \$5
- Class 5. Casual 90cm Prize money \$40, \$30, \$20, \$10 Entry Fee \$5
- Class 6. **Bob Manhood Memorial** - 100cm - Article 273.3.3.2 Prize money \$60, \$44, \$22, \$10 Entry fee \$6
- Class 7. 50-60cm showjump/hunter class – 6 sj & 6 hunter fences – Optimum time - Prize money \$20, \$10, \$5 Entry fee \$5
- Class 8. 80-90cm showjump/hunter class – 6 sj & 6 hunter fences – Prize money \$30, \$20, \$10. Entry fee \$5

SHOWJUMPING – CASUAL RING

Sunday 7th Nov - 9am start

Classes judged under Table 238.2.2 - unless otherwise stated

- Class 1. Casual 55cm Ribbon 1st & product, 2nd, 3rd - Entry fee \$5
- Class 2. Casual 65cm Optimum time Ribbon 1st & product, 2nd, 3rd - Entry fee \$5
- Class 3. Casual 80cm Prize money \$40, \$30, \$20, \$10 Entry Fee \$5
- Class 4. Casual 90cm One Round Stakes Article 239. Prize money \$40, \$30, \$20, \$10 Entry Fee \$5
- Class 5. Casual 100cm Prize money \$40, \$30, \$20, \$10 Entry Fee \$5
- Class 6. Casual 55cm Fancy Dress. Prize for best dressed only must complete sj round without elimination. \$50 donated by Four Winds Performance Horses. Entry Fee \$5 Prize money \$20, \$15, \$10, \$5
- Class 7. Casual 80cm Fancy Dress. Prize for best dressed only must complete sj round without elimination. \$50 donated by Four Winds Performance Horses. Entry Fee \$5 Prize money \$20, \$15, \$10, \$5

Can only enter class 6 or 7. The same horse can't be entered in both classes.



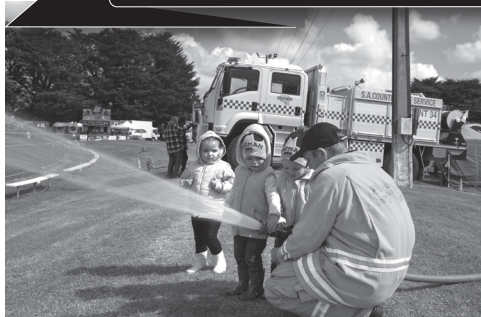
JAVA CAFE

Great spot for a break...

77A George St, Millicent SA 5280
Phone 08 8733 2288

Open Monday-Friday 8am - 4pm
and 9am - 2pm Saturday

PHOTOS FROM THE 2019



A. H. & P. ANNUAL SHOW



Photos by Mary Whitehead

Thank you to all sponsors and volunteers - from the Millicent AH & P Society, for your generous support in 2021

**Infigen@IberdrolaAustralia -
Lake Bonney Community Fund
AWI**

**Bowman Earthmovers
DA & JM Kain Transport
DR & KE Wells Transport
Elders - Millicent
Fosters Foodland
Kimberley-Clark Aust Pty Ltd
Nutrien - Millicent
Millicent Lions Club
Wattle Range Council
3MP**

A & B Thompson
ABC South East of SA
Acky's Takeaway
AJ & PA BcBride – Konetta
All in Balance
Alli Newley
Alternative Life Health &
Well Being Centre
Amanda Munn
Andre Family
Andy's Bakery
Angove
Banner Mitre 10
Banyula Pastoral - Colin Croser
Beerenberg
BJ & KA Walker
Blackbird Industries
Bond Family
Bowman Shearing & Mobile
Crutching Unit
BR & DA Clayton & ML Harrison
Broadview ASH
Cheviot Stud – D & C Lamont
Chris Shelton
CM & CE Watson
Coola Station - Tom & Tom Ellis
Cool Moose
Dalgety Wool
David Edwards & Family
Designs by Donna
Di Gorgio Family Wines
Elisha Kent
Flying R Pony Stud –
Sharon Cockburn & Amy Litchfield
Fosters Livestock Haulage
Fourwinds Performance Horses
G & S Bell
G & S Huppatz
Garner's Garage – Jim, Carol & Joe

Geering Shearing
Glen Street Pharmacy
Glenarbian Stud – I & B Nitschke
Glenfield ASH Stud
Goodnwindi Charolais
Gowan Brae Poll Dorset Stud -
Leigh Clifford
Gum Hill
Heaven on a Hanger
Helen Cook
Hume Taylor & Co
In 2 Trophies
J & M Shanks
Jaime Copping
Java Cafe - Helen Mules
JLT Aust Insurance Brokers
John Chay & Co Pty Ltd
John Kobes Webineering Workshop
Jones Family
June Whitehead
JW Equine Therapy
K & S Fuels Millicent
Kemp's Machinery Services
Kendrick Builders
Kent Properties Pty Ltd
Kerri Cox
KJ & HA McGrath
Kutz on Kentish
Laucke Mills
Lesla M Van-Uitert - Bouderae
Standardbreds
Lines Gumhill Merino Stud
Lynda Field
Mac Ford
Mahogany House
Mandy McIntyre
Manhood Family
Marino Uniforms
McCourts Garden Centre
Merchy's Laser Engraving
Mick Brennan
Millicent Chemist & Giftware
Millicent Farm Supplies
Millicent Florist
Millicent Industrial
Millicent Newsagency
Millicent Racing Club
Millicent Real Estate
Millicent Rotary Club
Millicent Toy Kingdom
Millicent Toyota

Millicent Tyre Centre
Millicent Vet Clinic
Mount Gambier Hay Run
Murray Nankivell Accountants
Myarra ASH Stud
N & M Hutchesson – The Avenue
Nicole Cleary Photography
Orrie Cowie Merino Stud
Penni Higginson
PPHS - Millicent
Primary Industries & Regions SA
Prime Super
R & J Bateman
RDA Mt Gambier
Rein It In Equine Photography
RJ & LP Gordon – Glenross Pastoral
RM Williams
Roger Smith Auto Parts
Royal Agricultural & Horticultural
Society SA
Russell Industries
Ryevue – M & J Osborne
Sassi
Sharp Cranes
Shearing Sheds & Rural
Construction
Showmen's Guild of SA
Since Fifty-Six
Smith Family
Sooz in the Shed
South East Property Sales and
Management
Sports Shear SA
Stock Journal Publishers
Stock Owners Shearing
Teana Kent
The Rich Family
Tim & Teena Goodes
T & K Watson
Teagle Excavations Pty Ltd
The Harness Gang
The Medical Clinic Millicent
The Produce Store
The Shearer's Cook
The Tack Room
Vondue Plumbing
Wadsley Family
Wattle Range Funerals
Wattle Range Trading
Wildfusion Flower Studio
Woolworths Millicent

